

# Rendering and Documenting Light

## Documenting A Lighting Plan

- § Concept
- § Drawing / Documentation
  - *Layout*
  - *Symbols*
- § Fixture Specifications
  - *Fixture Descriptions*
  - *Fixture Cuts / Mnfrs Submittals*
  - *Fixture Details*

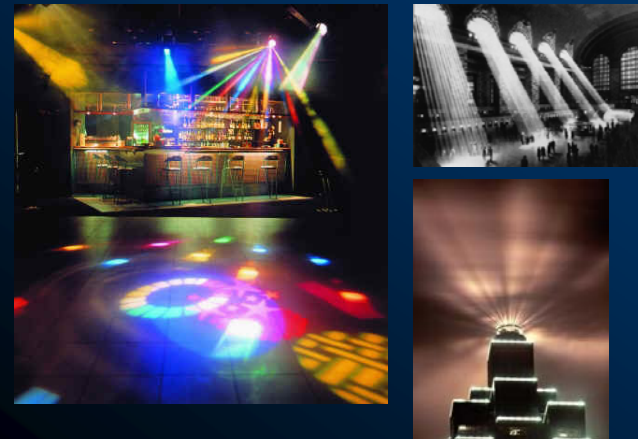
## Rendering Light



## Light and Air



## Light and Air



# Rendering and Documenting Light

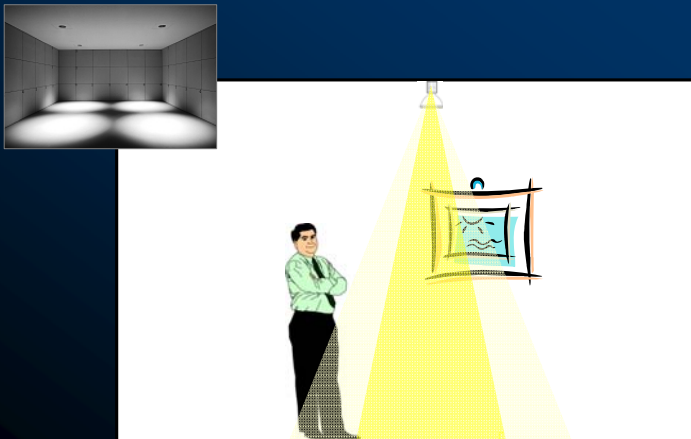
Light and Air



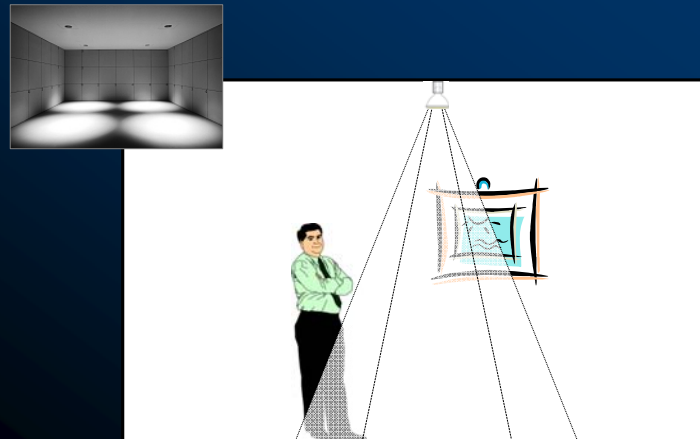
Documenting Light



Documenting Light

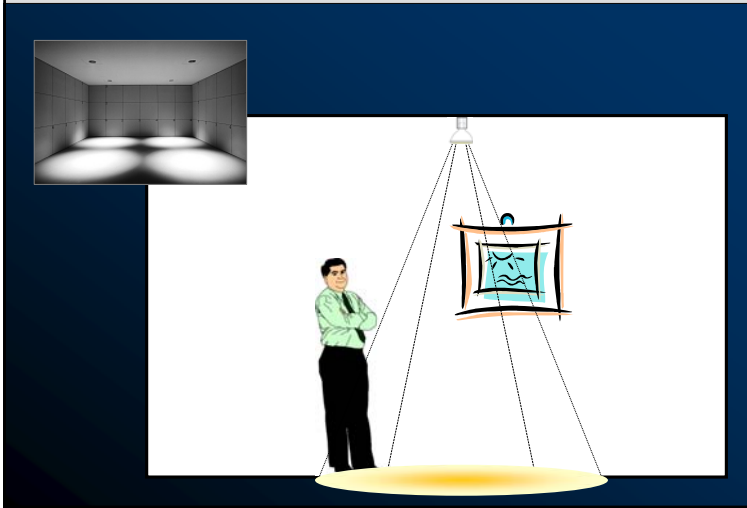


Documenting Light

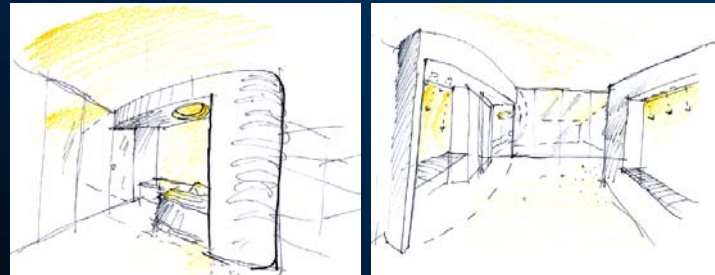


# Rendering and Documenting Light

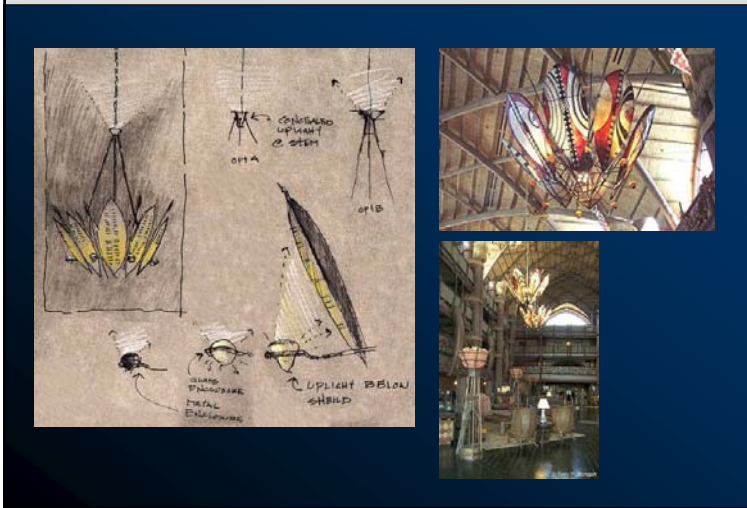
## Documenting Light



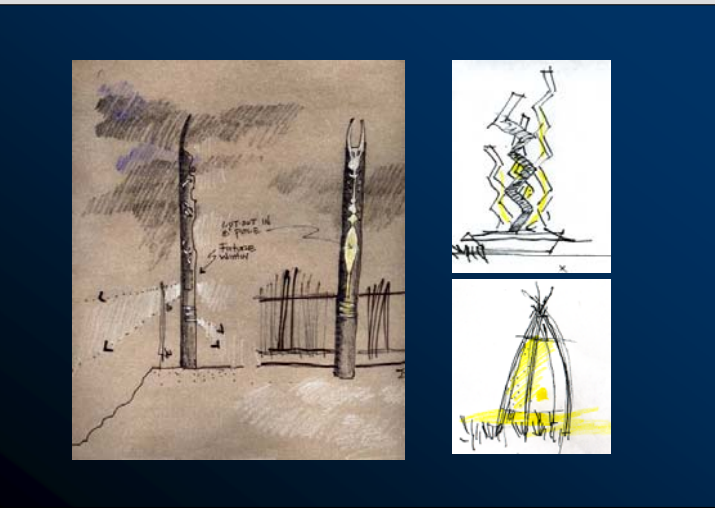
## Documenting Light Concepts



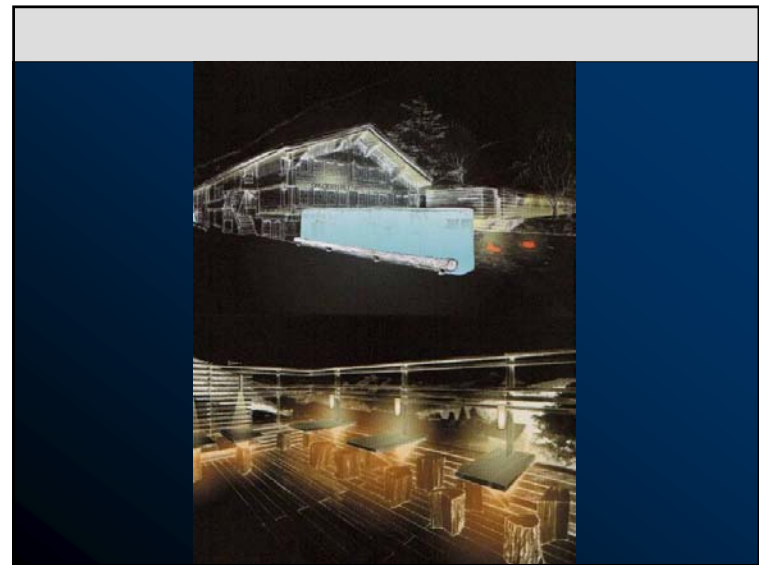
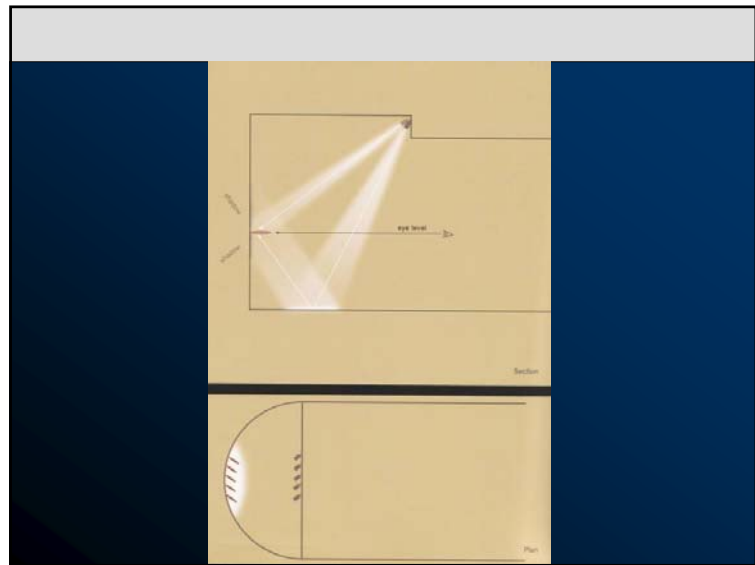
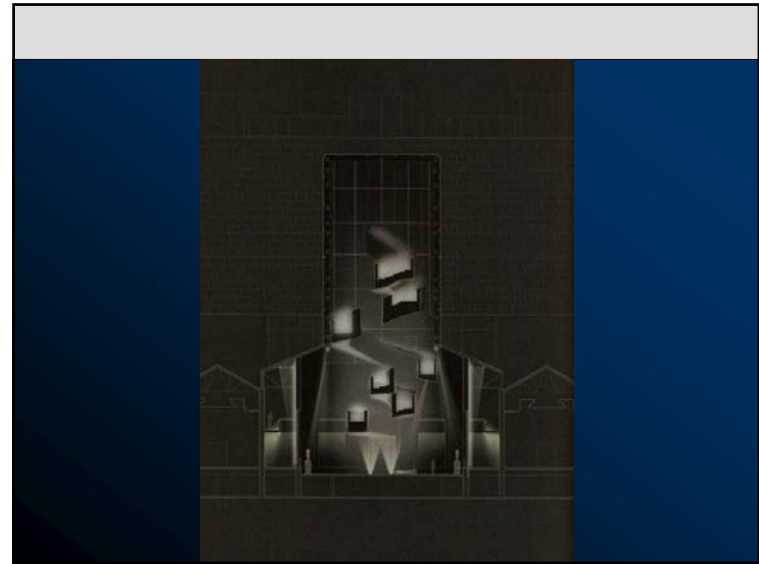
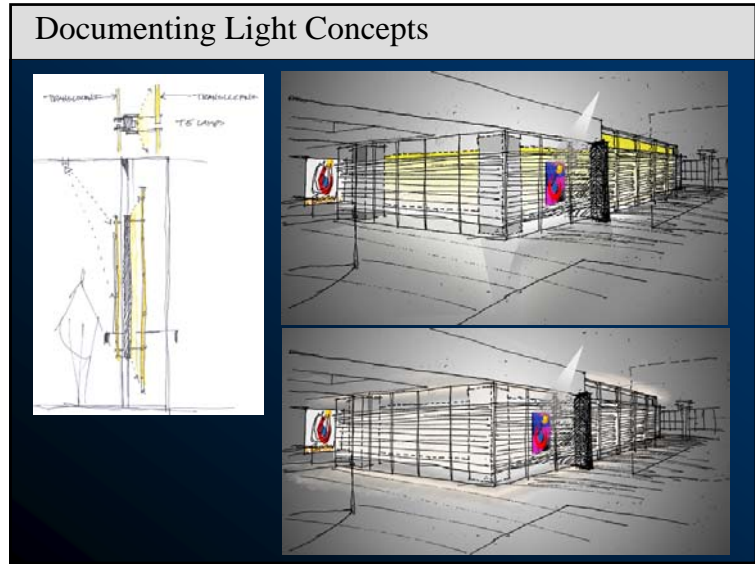
## Documenting Light Concepts



## Documenting Light Concepts

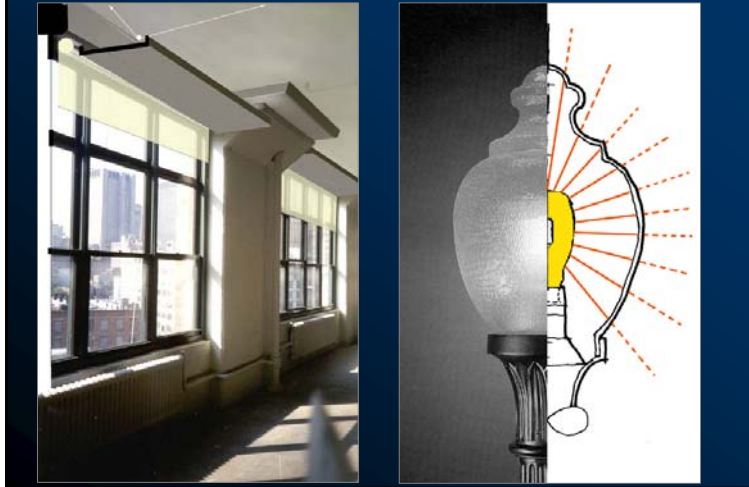


# Rendering and Documenting Light

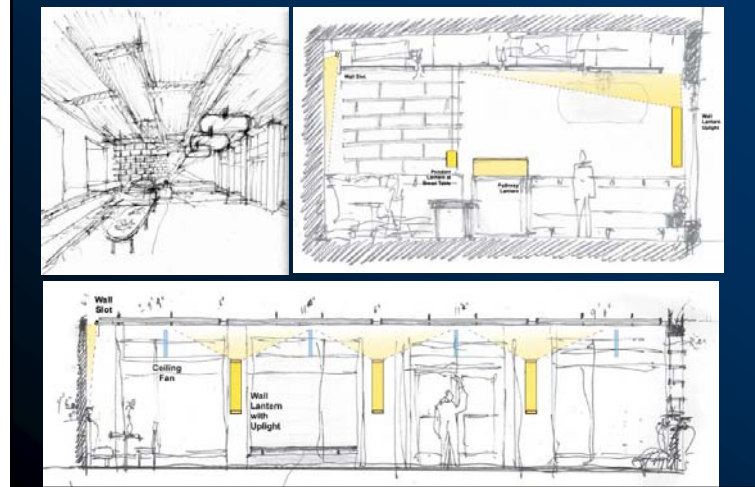


# Rendering and Documenting Light

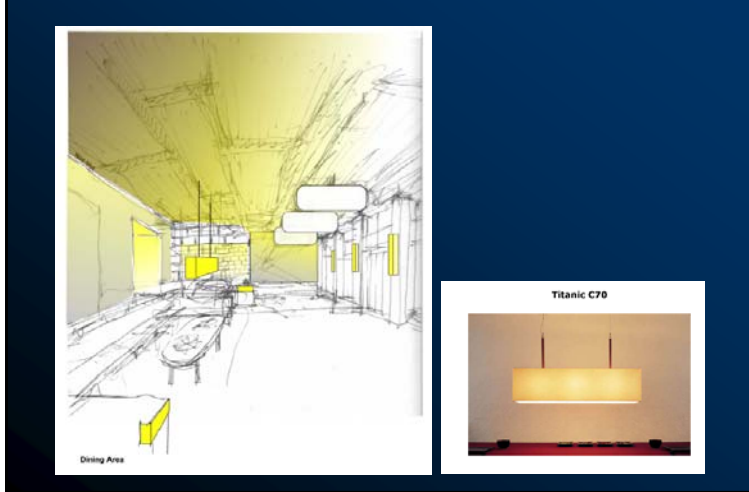
## Documenting Light Concepts



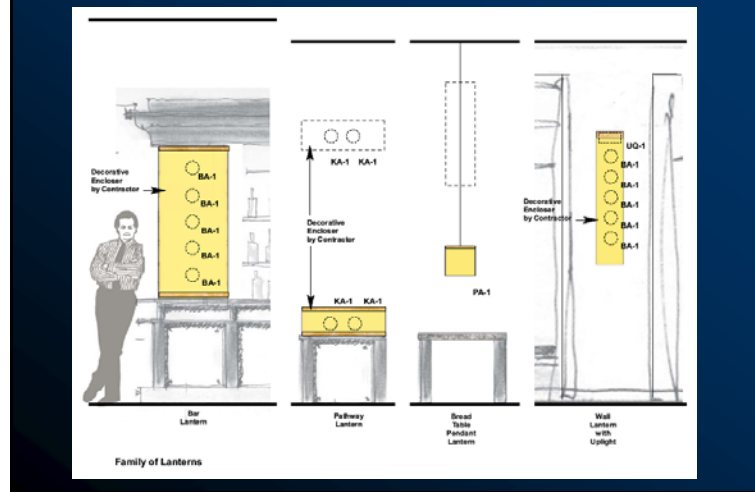
## Documenting Light Concepts



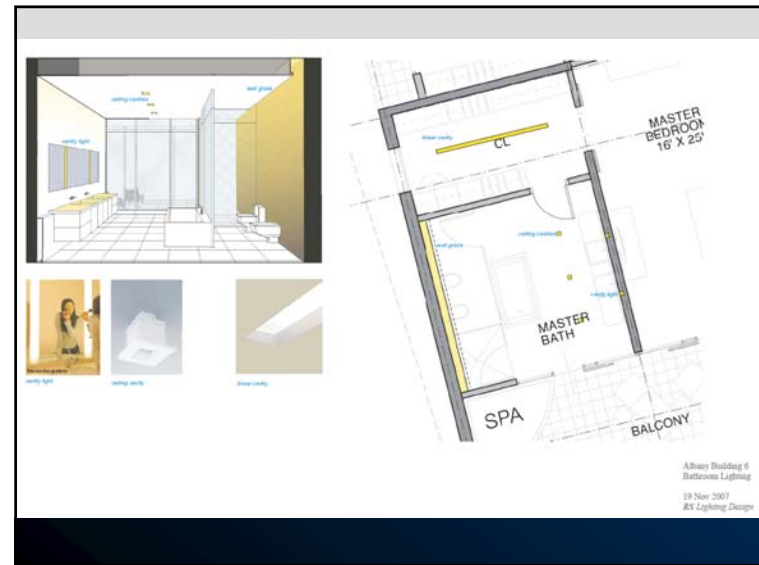
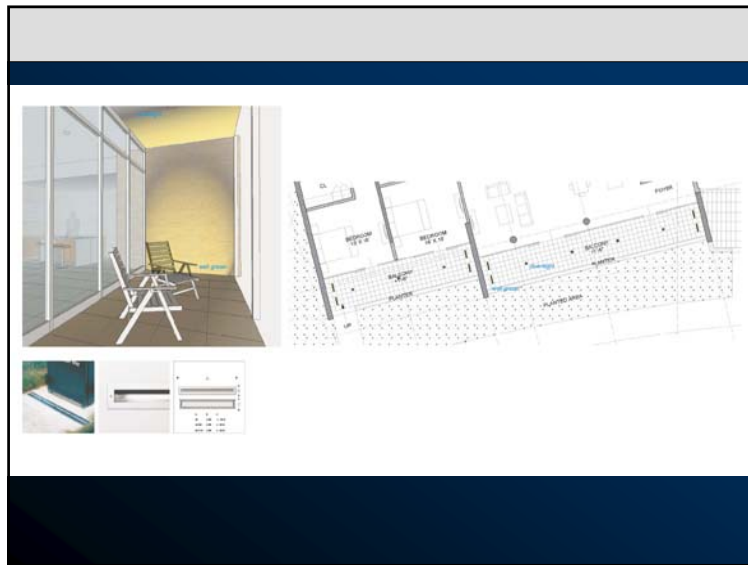
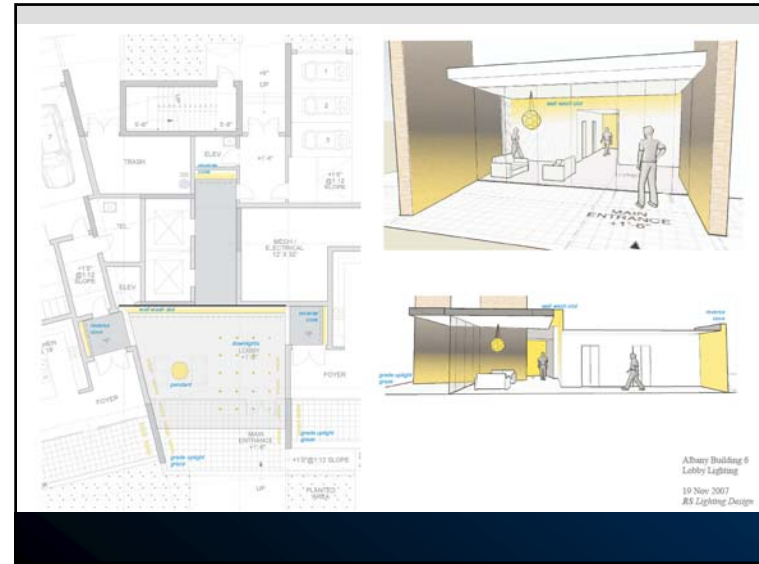
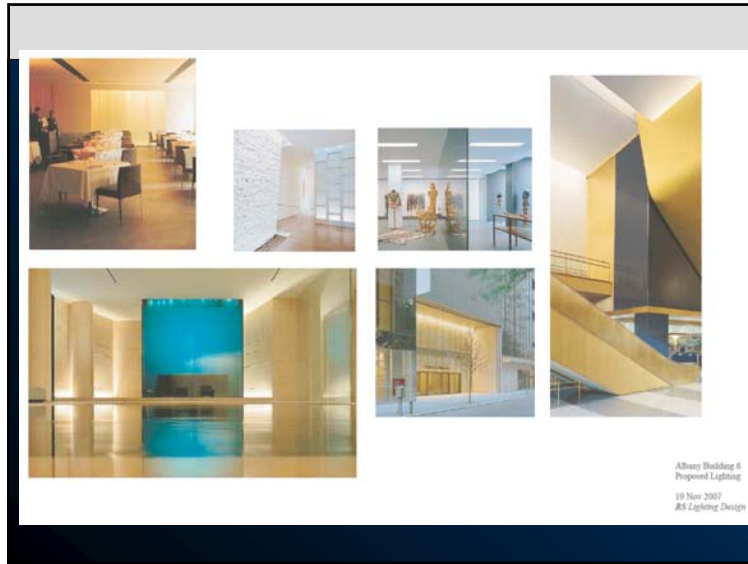
## Documenting Light Concepts



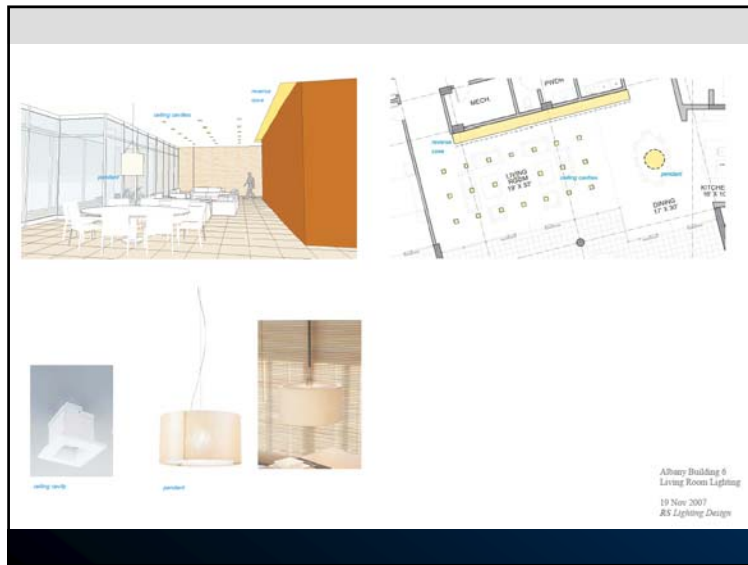
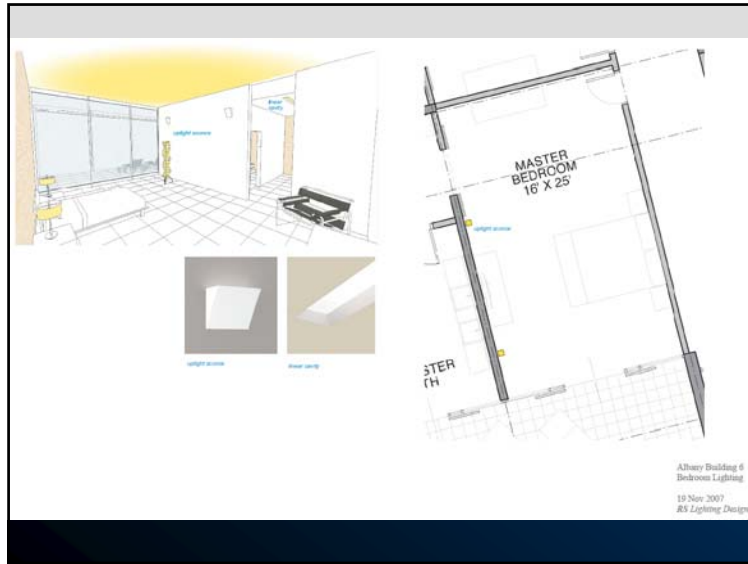
## Documenting Light Concepts



# Rendering and Documenting Light



# Rendering and Documenting Light




## Documenting A Lighting Plan

- § Concept
- § Drawing / Documentation
  - Layout
  - Symbols
- § Fixture Specifications
  - Fixture Descriptions
  - Fixture Cuts / Mfrs Submittals
  - Fixture Details

# Rendering and Documenting Light

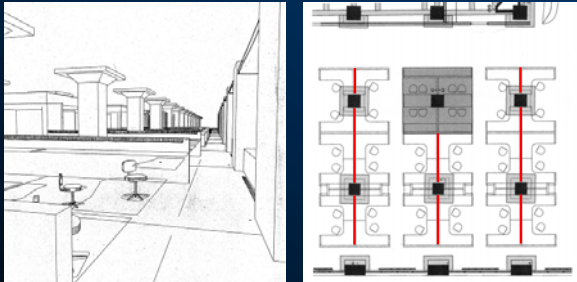
Documenting A Lighting Plan

§ Documentation... Layout



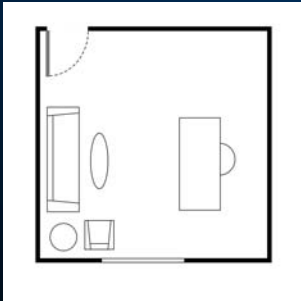
Documenting A Lighting Plan

§ Documentation... Layout



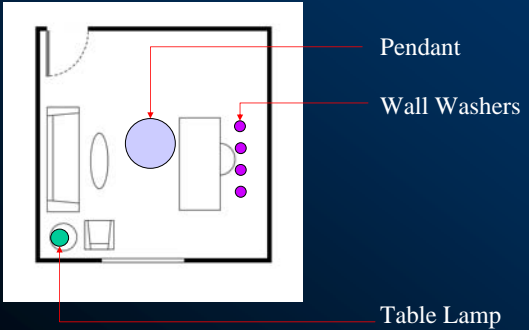
Documenting A Lighting Plan

*Defining light fixtures locations*



Documenting A Lighting Plan

*..... Diagram Method*



Pendant

Wall Washers

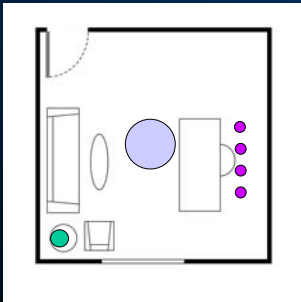
Table Lamp



# Rendering and Documenting Light

Documenting A Lighting Plan

..... Legend Method

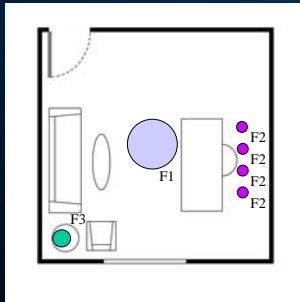


Legend:

- Pendant
- Wall Washers
- Table Lamp

Documenting A Lighting Plan

..... Type Method

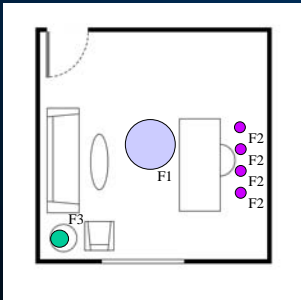


Fixture Types:

- F1 Pendant
- F2 Wall Washers
- F3 Table Lamp

Documenting A Lighting Plan

..... Type Method



*Fixture Specification*

Fixture Types:

- F1 Pendant
- F2 Wall Washers
- F3 Table Lamp

Documenting A Lighting Plan

§ Fixture Specifications

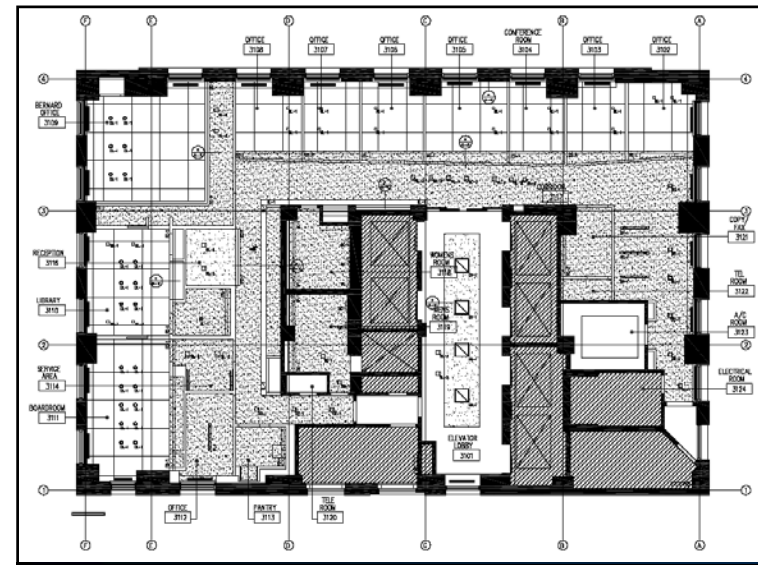
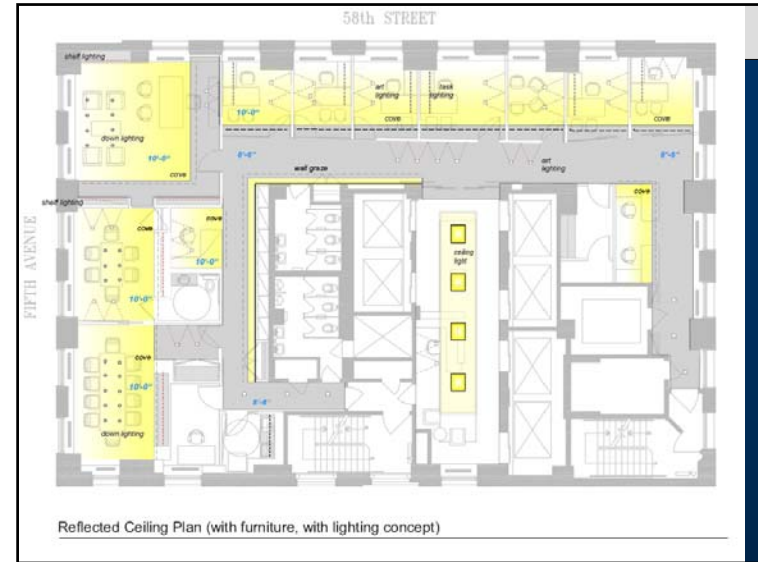
- § Written Documentation to Describe Fixture
  - Location, Size, Performance, Source, etc.
  - Manufacture!!!!
- § Keyed to a Layout or Plan
  - Type Designations
- § Fixture Cuts
  - Manufactures Catalog Cuts or Submittals
  - Details

# Rendering and Documenting Light

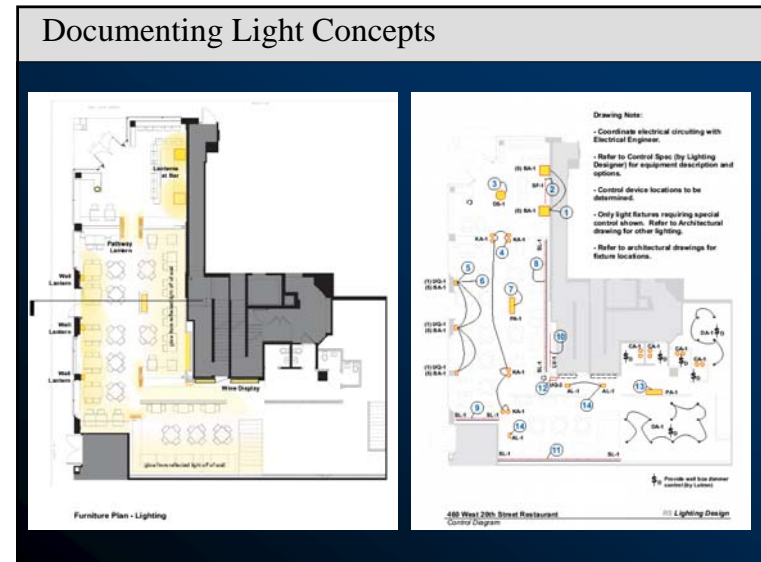
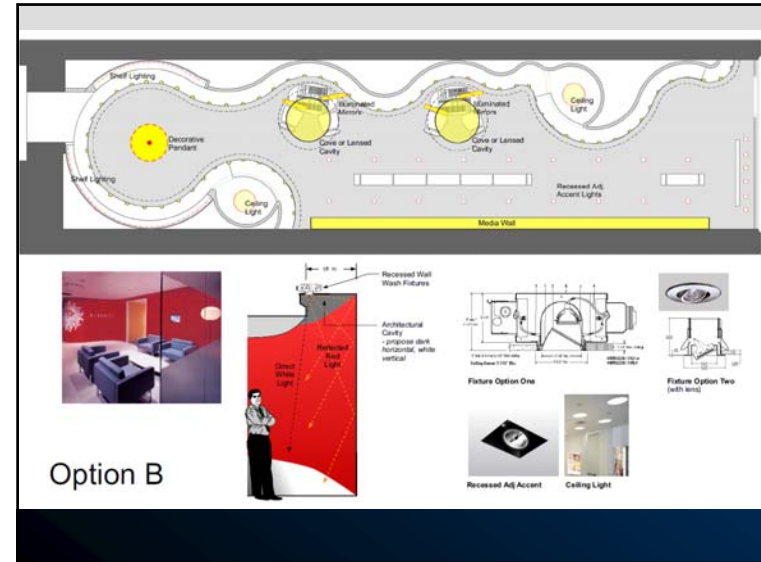
## Documenting A Lighting Plan

### § Graphics / Symbols

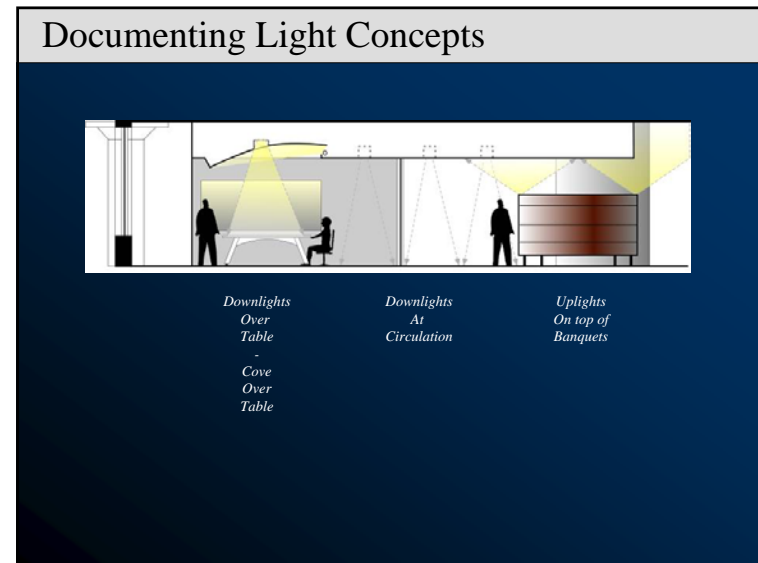
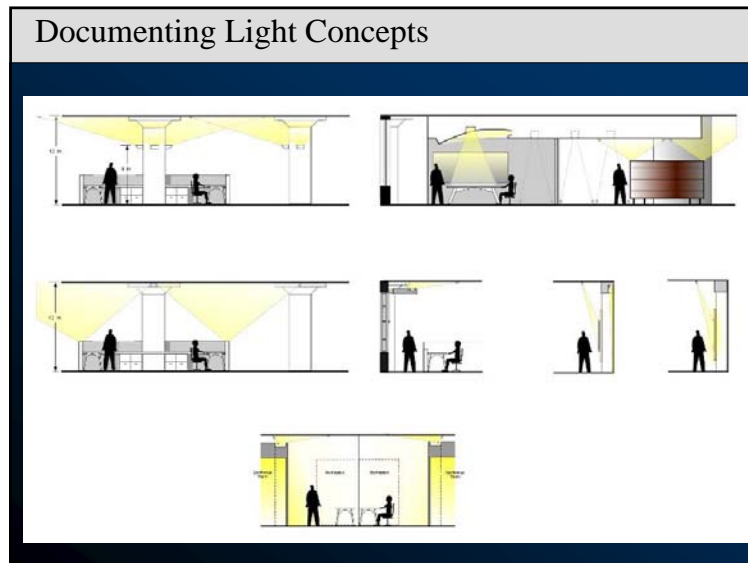
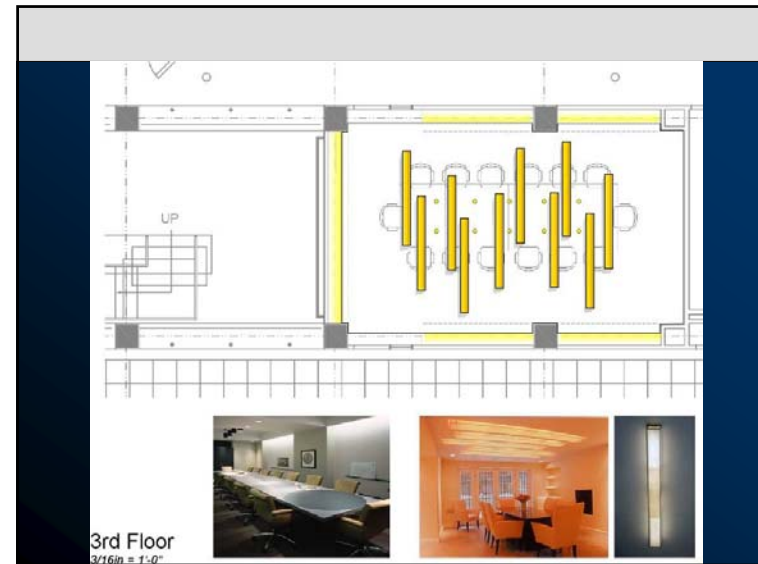
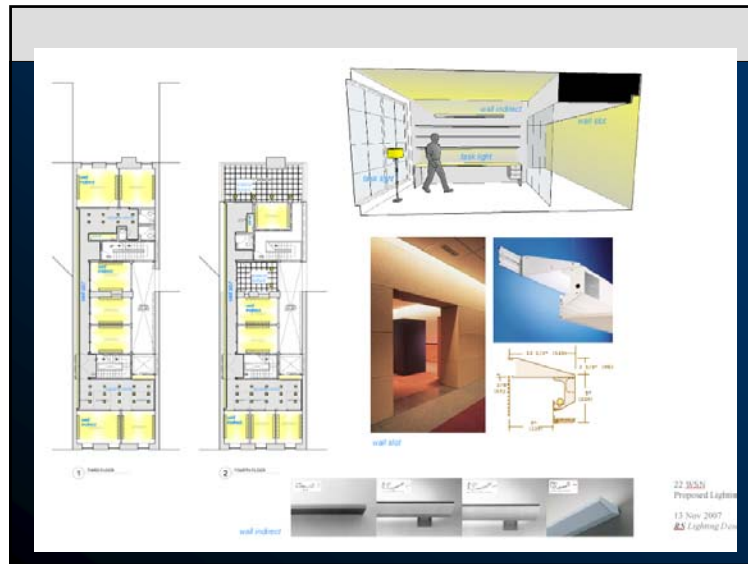
			§ Graphic to Define Location
<i>Downlight</i>	<i>Accent</i>	<i>Wall Wash</i>	
			• Floor, Walls, Ceiling (Solid or Dashed) • Drawn to Scale and Shape
<i>Wall Bracket or Sconce</i>			
			§ Descriptive of the Type of Fixture
<i>Ceiling Light</i>			
			§ Keyed to Legend or Fixture Specification (aka <b>Schedule</b> )
<i>Pendant</i>			



# Rendering and Documenting Light

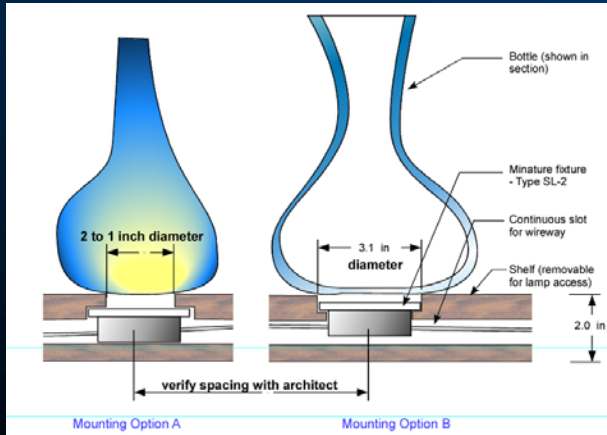


# Rendering and Documenting Light

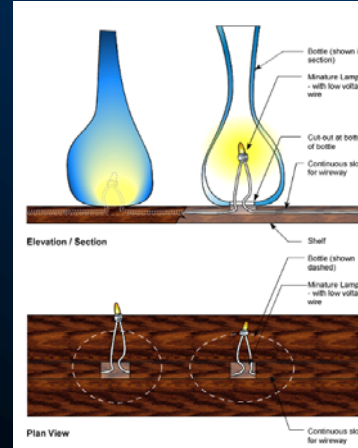


# Rendering and Documenting Light

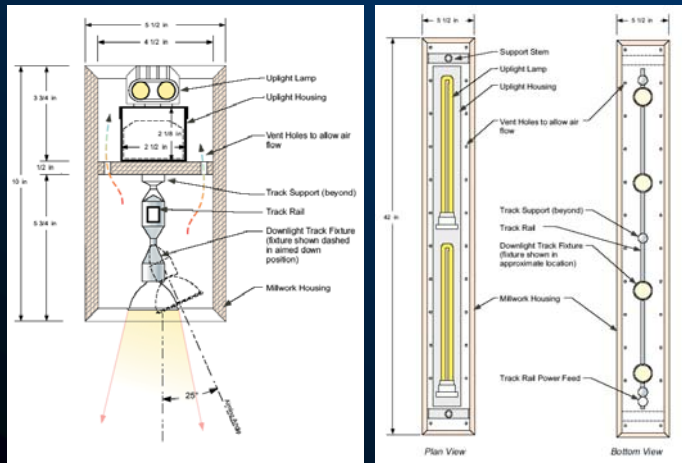
## Documenting Light Concepts



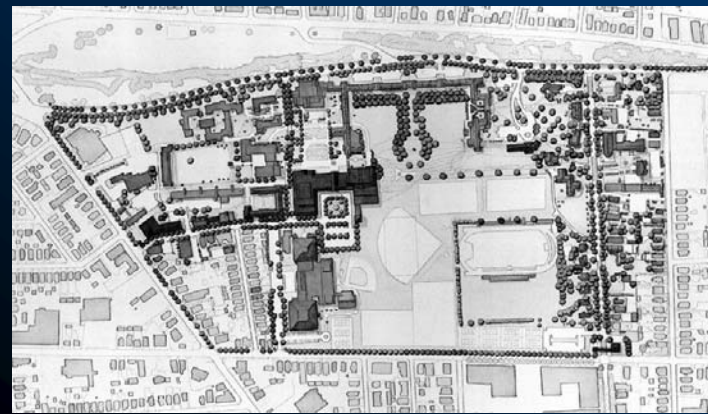
## Documenting Light Concepts



## Documenting Light Concepts

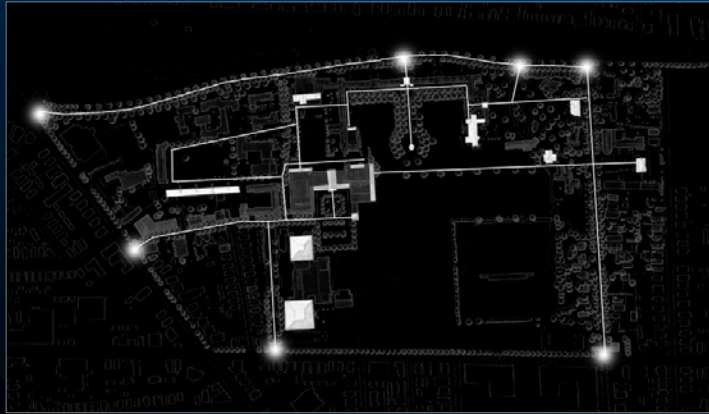


## Documenting Light Concepts

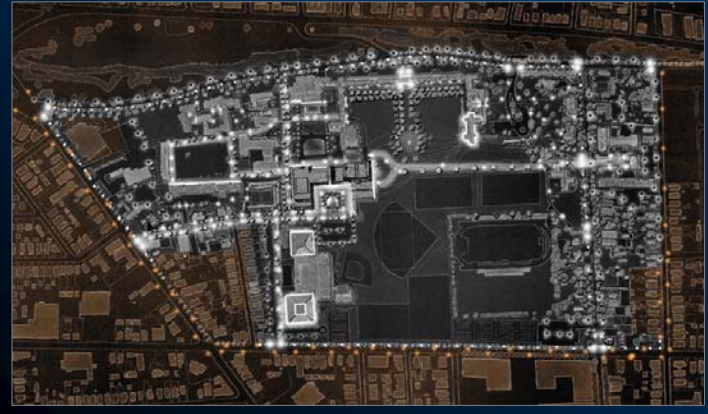


# Rendering and Documenting Light

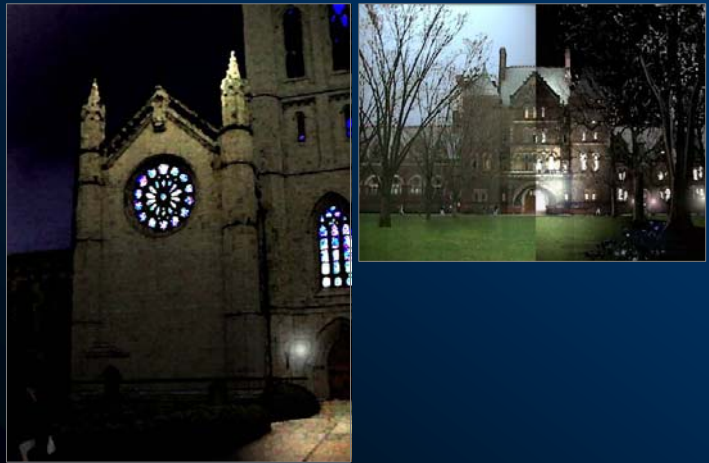
Documenting Light Concepts



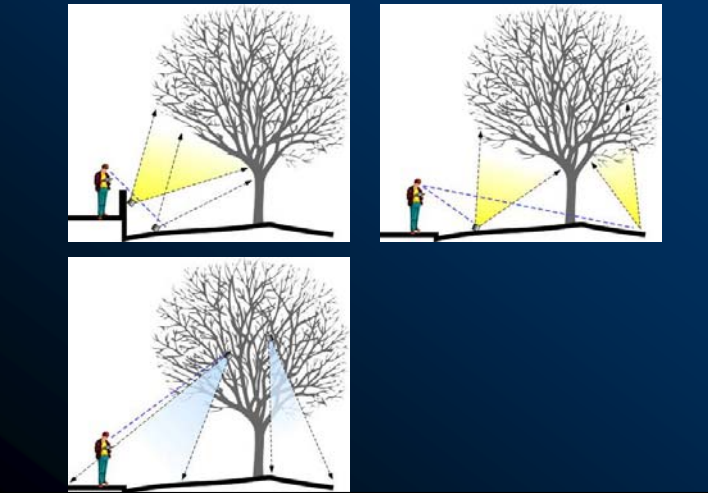
Documenting Light Concepts



Documenting Light Concepts



Documenting Light Concepts

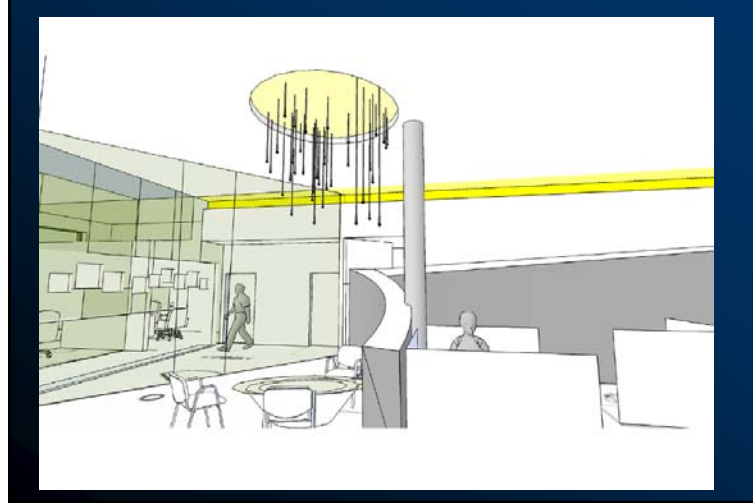


# Rendering and Documenting Light

Documenting Light Concepts



Sketch-up Renderings



Sketch-up Renderings



Sketch-up Renderings

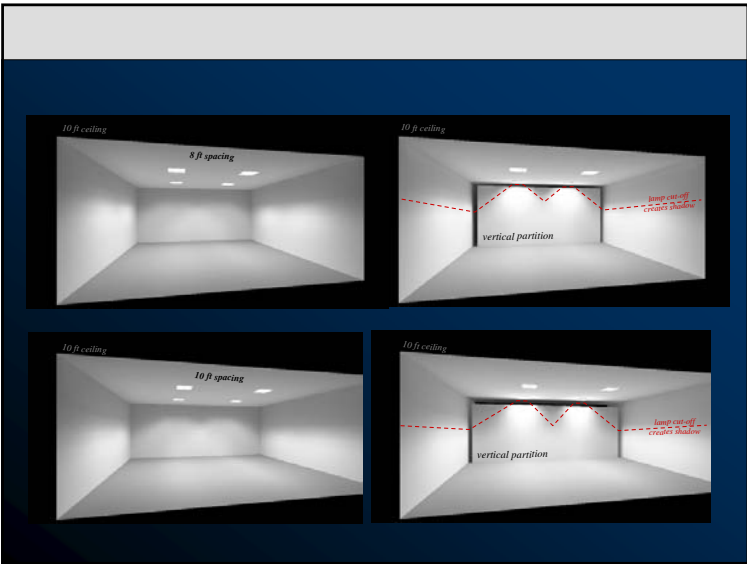


# Rendering and Documenting Light

## Sketch-up Renderings

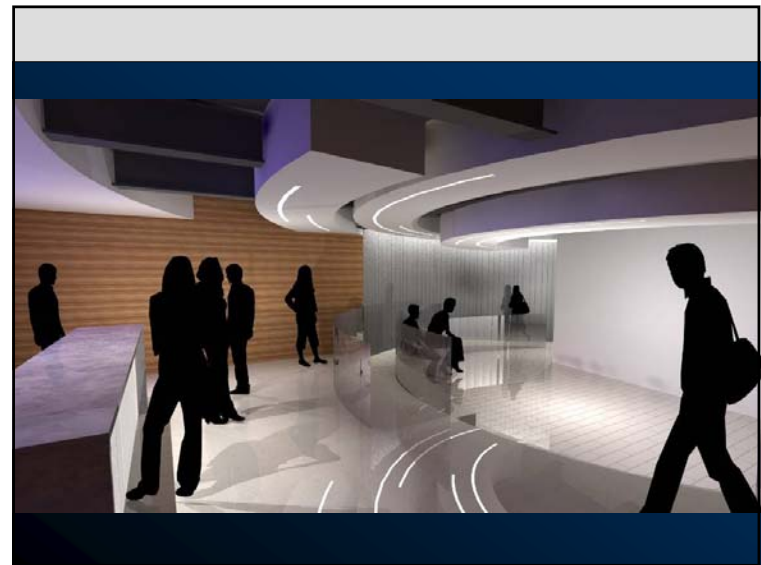
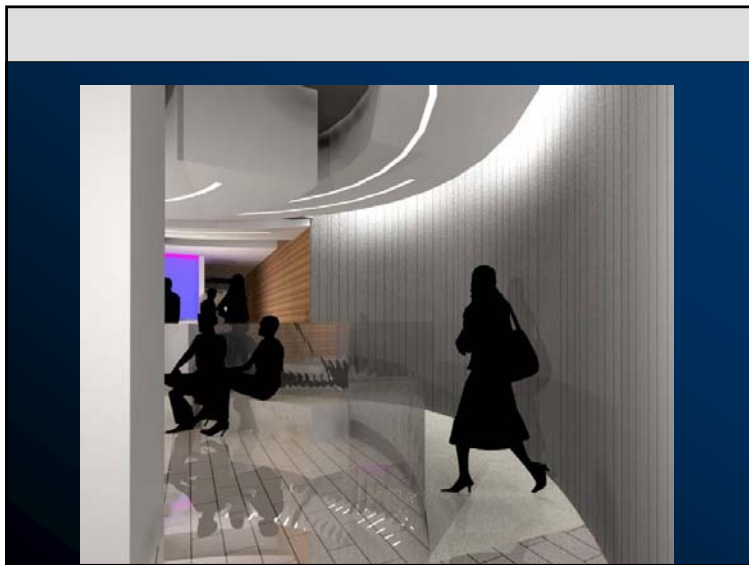
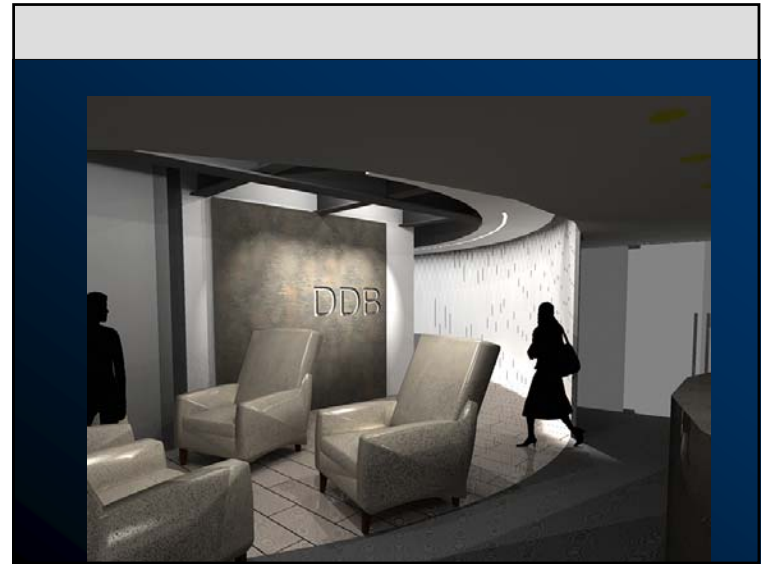
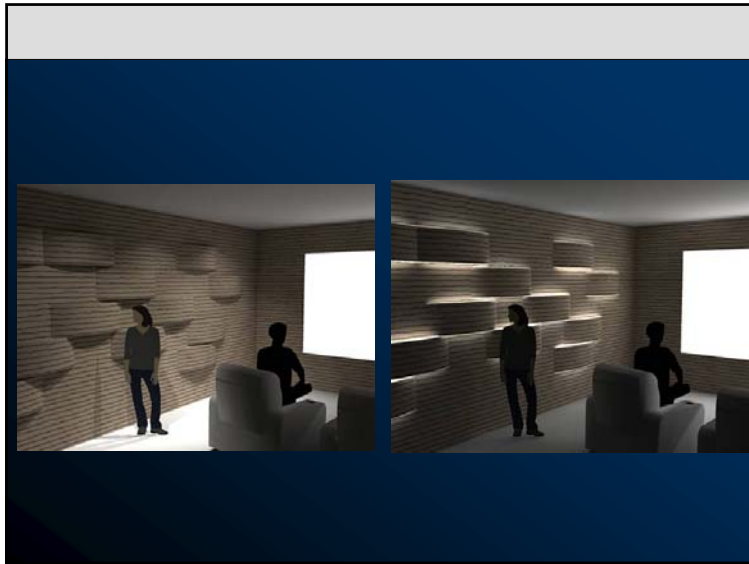


## Sketch-up Renderings

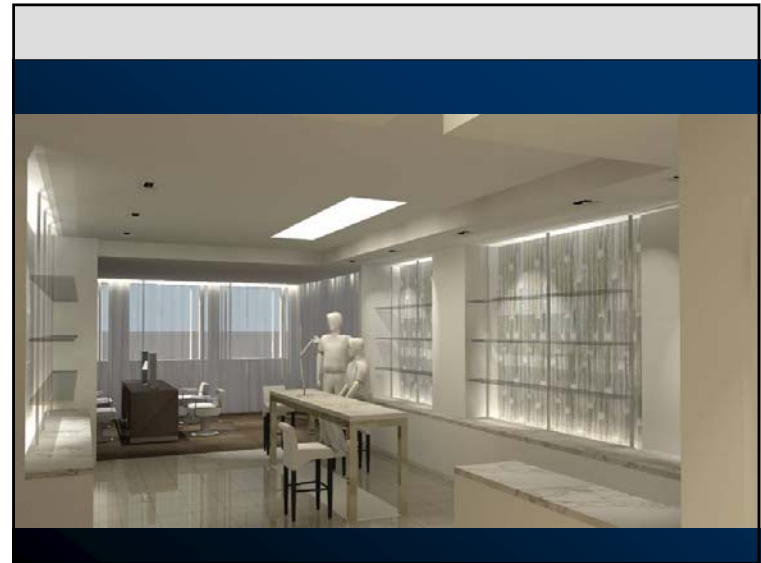
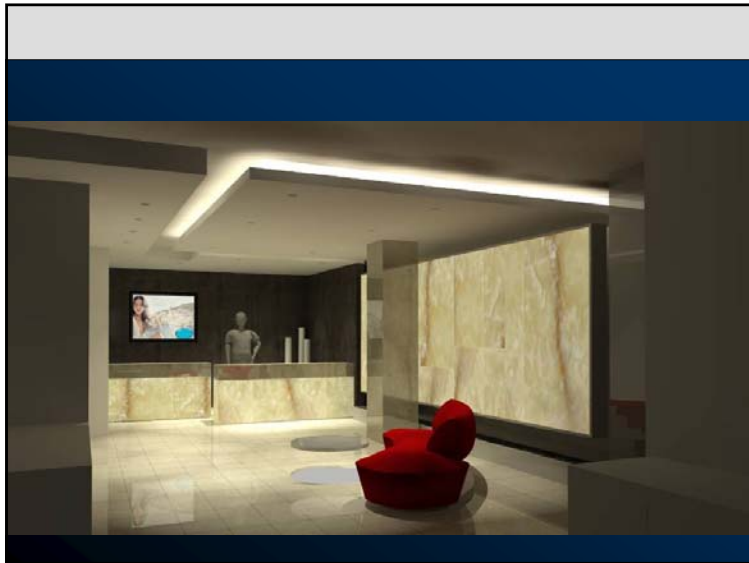
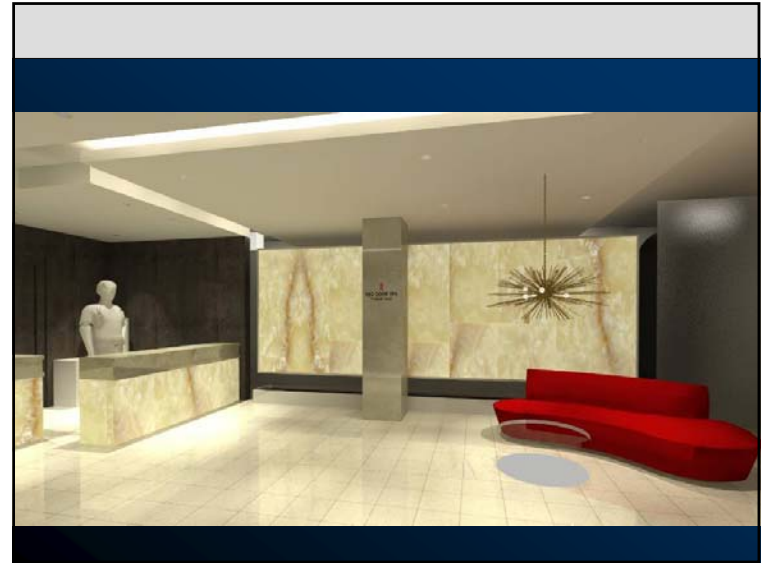
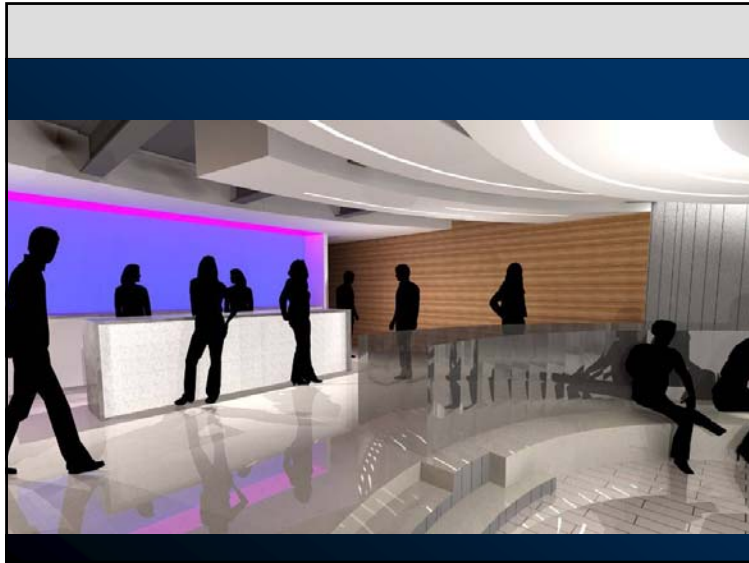




## Rendering and Documenting Light



## Rendering and Documenting Light



# Rendering and Documenting Light

## Documenting A Lighting Plan

- § Concept
- § Drawing / Documentation
  - *Layout*
  - *Symbols*
- § Fixture Specifications
  - *Fixture Descriptions*
  - *Fixture Cuts / Mnfrs Submittals*
  - *Fixture Details*

## Documenting A Lighting Plan: Specifications

Lehman Office  
Schematic Lighting Layout

## Documenting A Lighting Plan: Specifications

Lighting Layout Plan

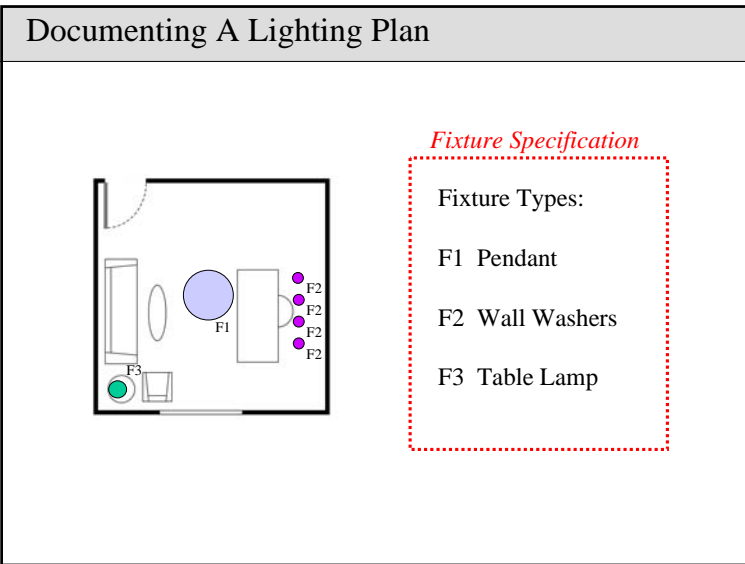
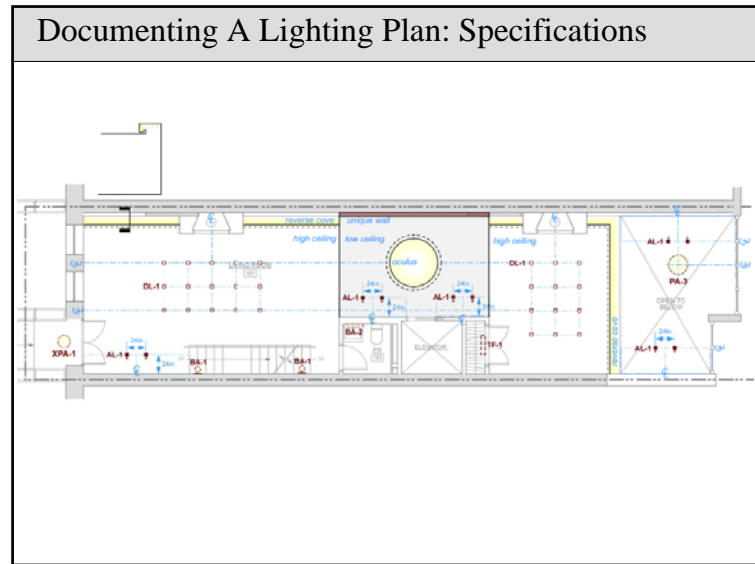
Type DL-1  
reflected above

Lit Display Shelves

Type RF Recessed Slot  
- louvered

## Documenting A Lighting Plan: Specifications

# Rendering and Documenting Light



### Type Designations (RS Lighting Design)

X	B	A	- 1
<i>Optional for Exterior Fixtures</i>	Function	Source (Lamp)	Number
	<b>A</b> Accent Light <b>B</b> Bracket/Sconce <b>C</b> Ceiling Light <b>D</b> Downlight <b>F</b> Floodlight <b>K</b> Other <b>L</b> Landscape <b>P</b> Pendant <b>R</b> Cove <b>S</b> Socket Strip/Channel <b>T</b> Task / Table Lamp <b>U</b> Uplight / Indirect <b>W</b> Wall Wash <b>Y</b> Track Fixture	<b>A</b> Arbitrary (Incand) <b>C</b> Compact Fluor. <b>D</b> Diode (LED) <b>F</b> Fluorescent (Tubular) <b>H</b> High Pressure Sodium <b>I</b> Induction <b>L</b> Low Voltage <b>M</b> Metal Halide <b>N</b> Neon <b>P</b> Parabolic <b>Q</b> Quartz Halogen	<i>Used to identify size, wattage, series, etc.</i>
<b>Other Misc:</b>	<b>BO</b> Bollard <b>CU</b> Custom <b>DS</b> Designer Select	<b>EX</b> Existing <b>YY</b> Track <b>FC</b> Fluor. Cove	

- ### Documenting A Lighting Plan: Specifications
- § Fixture Specifications ... *text format written as paragraphs or table*
1. Written Documentation to Describe Fixtures.....**Labeled by Type**
    - *Mounting*
    - *Description of Fixture Application*
    - *Dimensions*
    - *Material*
    - *Performance*
    - *Source / Lamp*
    - *Finish*
    - *Manufactures Model and Ordering Code*
    - *Special Coordination or installation notes*
  2. Fixture Cuts... **Labeled by Type**
    - *Manufactures Catalog Cuts or Submittals*
    - *Installation Details*

# Rendering and Documenting Light


## Documenting A Lighting Plan: Specifications

### Text Format

Mounting Description of Fixture Application, Dimensions, Material, Performance, Source / Lamp

Finish

Manufactures Model and Ordering Code, Special coordination or installation notes



Example:

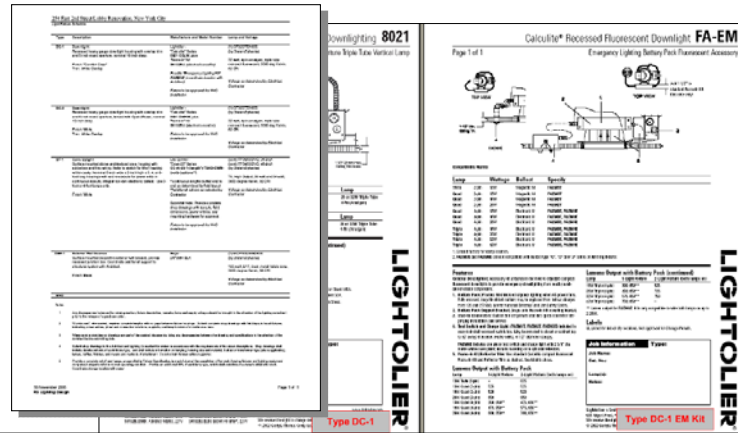
Surface 12 inches high x 8 inches wide x 4 inch projection from wall, curved shaped glass diffuser with metal back plate for 100 watt frosted A-lamp

Finish: White glass with polished chrome metal

Mnfr: Flos "Venesia" model number 12345

## Documenting A Lighting Plan: Specifications

### Lighting Specification Package



## Documenting A Lighting Plan: Specifications

### Table Format

254 East 2nd Street Lobby Renovation, New York City  
Light Fixture Schedule

Type	Description	Manufacture and Model Number	Lamp and Voltage
DC-1	Downlight Recessed heavy gauge downlight housing with overlap trim and 6-inch round aperture, nominal 10-inch deep. Finish: "Comfort Clear" Trim: White Overlay	Lightolier - "Calculte" Series 8021 CCLW plus "frame-in" kit S6112BU (electronic-nondim)  Provide "Emergency Lighting Kit" FAEMSE (coordinate location with Arch/elec)  Fixture to be approved for NYC installation	(1) CF320TEN330 (by Osram/Sylvania)  32 watt, 4-pin amalgam, triple tube compact fluorescent, 3000 deg Kelvin, S2 CR1  Voltage as determined by Electrical Contractor
DC-2	Downlight Recessed heavy gauge downlight housing with overlap trim and 6-inch round aperture, lined with Opal Diffuser, nominal 10-inch deep. Finish: White Trim: White Overlay	Lightolier - "Calculte" Series 8091 D2WW plus "frame-in" kit S6112BU (electronic-nondim)  Fixture to be approved for NYC installation	(1) CF320TEN330 (by Osram/Sylvania)  32 watt, 4-pin amalgam, triple tube compact fluorescent, 3000 deg Kelvin, S2 CR1  Voltage as determined by Electrical Contractor
SF-1	Cove Uplight Surface mounted above architectural cove, housing with splice box and thru wiring. Refer to sketch for tilt of housing within cavity. Nominal 6-inch wide x 24-inch high x 3, 4, or 8-foot long housings with end knockouts for power entry in continuous layouts, integral non-dim electronic ballast. Use 3-foot and 8-foot lengths only.	Lite Control - "Cove-Up" Series CC-AI-25-1 (length) x TSHO-CWM (width) (options "M")  * continuous lengths butted end to end as determined by field layout	(cont) FP39130HO, 36-inch (cont) FP34130HO, 48-inch (by Osram/Sylvania)  15, High Output, 39 watt and 54 watt, 3000 degree Kelvin, S2 CR1

### Table Format

Elizabeth Arden Store - 691 Fifth Avenue, New York City  
Light Fixture Schedule

Type	Description	Manufacture and Model Number	Lamp and Voltage
AL-4	Wash Light - at Sink - recessed above network ceiling one lamp MR16 lamp lensed wall wash light housing with splice box, and integral Mag V transformer. Contractor to coordinate mounting with ceiling conditions, mounting hardware and "removable" screw-in" mountments with Electrical Contractor, and finish ceiling details. - nominal 15-inch long x 3-inch recess depth above ceiling. Lens holder to contain optical assembly for wall wash distribution. Finish: Black interior with White overlap. (Verify with architect if custom color is required)	RSA Lighting - "Quadrangle" Series QCT-275-MR16-300 QCT-288 Housing  * verify with architect if custom color is required	(1) DIMMABLE/120V (by Osram/Sylvania)  30 watt, MR-16, 24 degree, "Tri-aim Star" Hard Diffuser Reflector Cover Glass  120 volt primary, 12 volt secondary Mag V Transformer integral within fixture
DS-1	Minor Sconce - provided by others	3000 degree Kelvin, S2 CR1	
CC-1	Ceiling Light - recessed above ceiling decorative flush to ceiling lense fixture with splice box. - nominal 24-inch diameter x 7.5-inch recess depth above ceiling. Contractor to coordinate mounting with ceiling conditions, and mounting hardware requirements with Electrical Contractor, and finish ceiling details. Finish: White	Main Lighting - "Tallpole" Series M22 (width) (options)  provide full range (15%-100% dimming ballast)	(4) FT40C430R3 (by Osram/Sylvania)  75, 40 watt, Blue, 3000 degree Kelvin, S2 CR1  Voltage as determined by Electrical Engineer
PA-1	Decorative Diameter - provided by Owner	None 300 wide mountments	
SD-1	RGB LED Grazer at Color Wall - surface mounted architectural network linear LED channel with adjustable mounting bracket (by mfr) and power/DMX ready (by mfr) Contractor to coordinate mounting detail and power entry with Architect. - housing to be extended aluminum nominally 3-inch wide x 2-	Traxon Technologies - "Traxon Grazer" Series GRAZER-3x40R3P-642588 (bracket) (used for softening) 60, 40, and 18 Watts	3 watt, Red, Blue, and Green LED by wall  120 volt

## Rendering and Documenting Light

### Finding Fixtures

- General Lighting Mnfrs Websites
  - [www.Lightolier.com](http://www.Lightolier.com)
  - [www.Erco.com](http://www.Erco.com)
- Light Fixture Search Sites
  - [www.LightSearch.com](http://www.LightSearch.com)
  - [www.eLumit.com](http://www.eLumit.com)
- Retail Sites
  - [www.Lightology.com](http://www.Lightology.com)
  - [www.unicahome.com](http://www.unicahome.com)
  - [www.lumens.com](http://www.lumens.com)
  - [www.100watt.net](http://www.100watt.net)