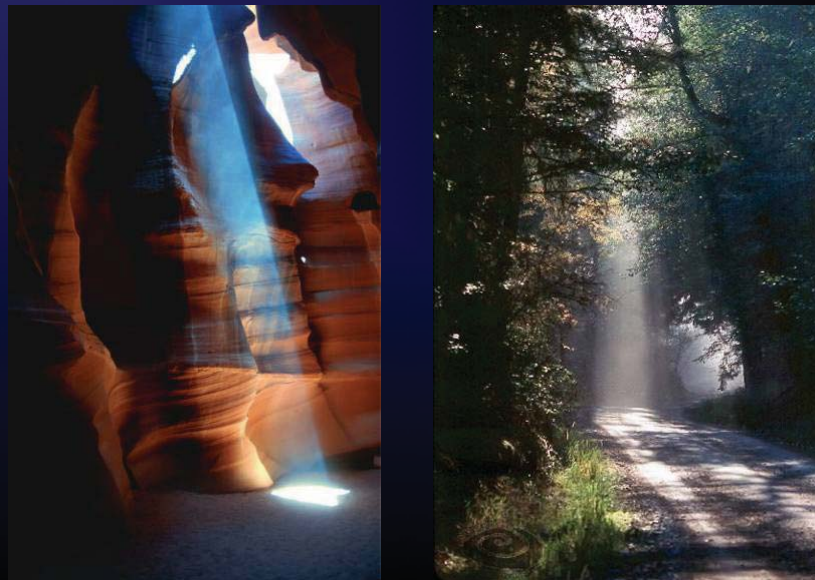


Rendering and Documenting Light

Rendering Light



Light and Air



Rendering and Documenting Light

Light and Air



Albany Building 6
Proposed Lighting
19 Nov 2007
RS Lighting Design

Rendering and Documenting Light

Compositions of Light – the development of a concept

What Is The Desired Look?

- Light Mapping
- Direction of Light
- Painting with Light

Light Mapping

... use a number scale to define bright to dark


10.....5.....1
Bright Mid Dim



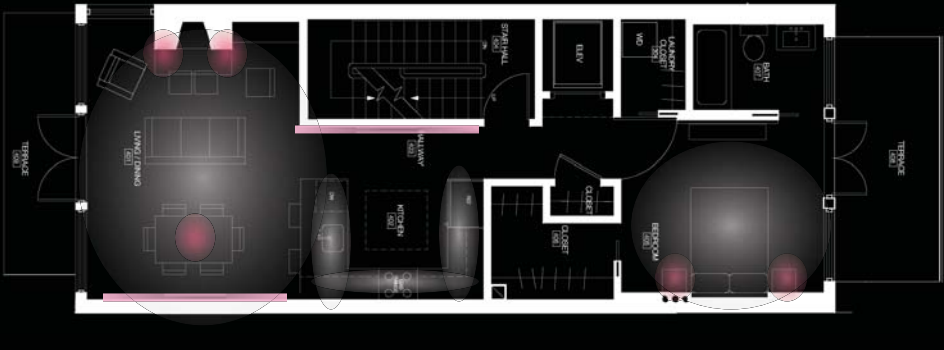
Rendering and Documenting Light

Painting with Light

... use a “values” of white or color to define layers of light


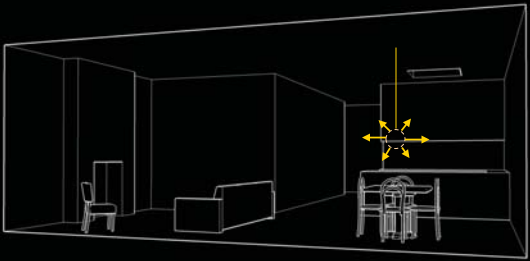


sparkle focus ambient



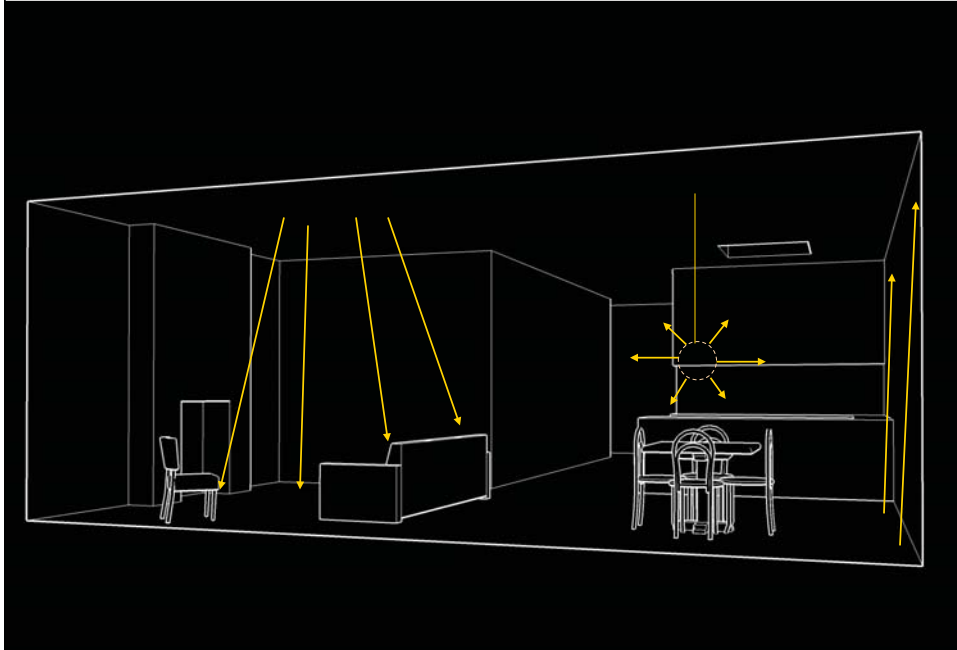
Direction of Light

... use arrows to define direction or distribution of light



Rendering and Documenting Light

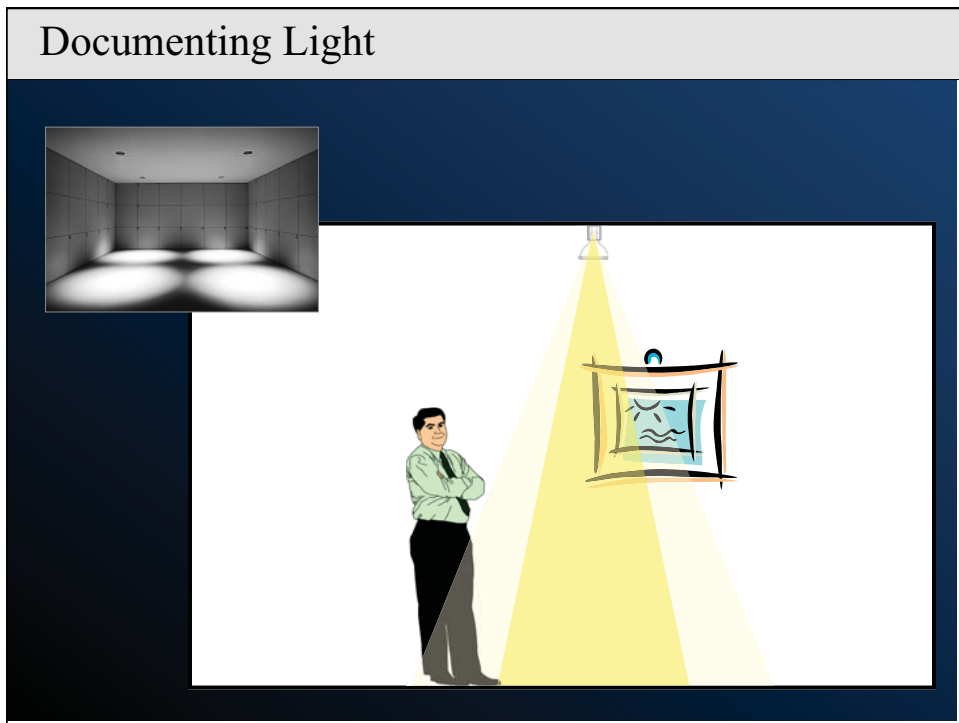
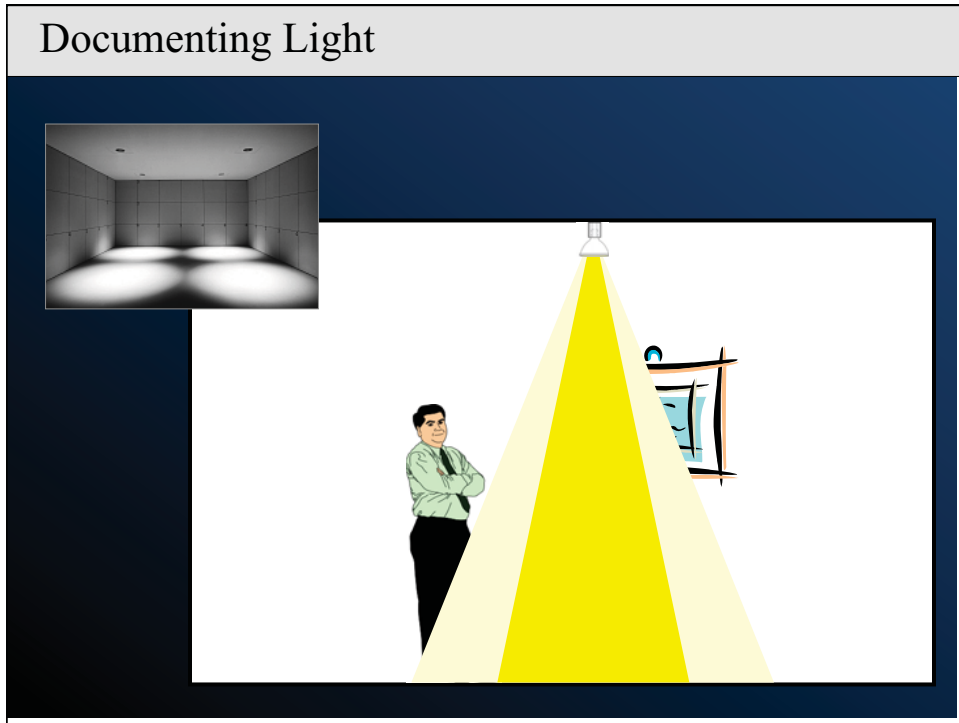
Direction of Light



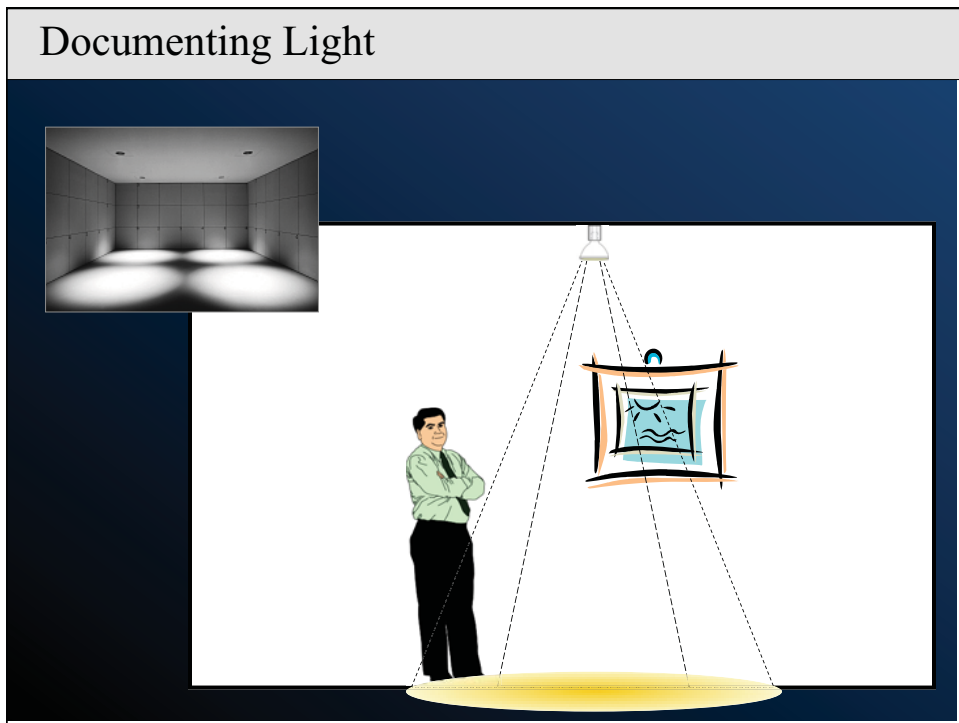
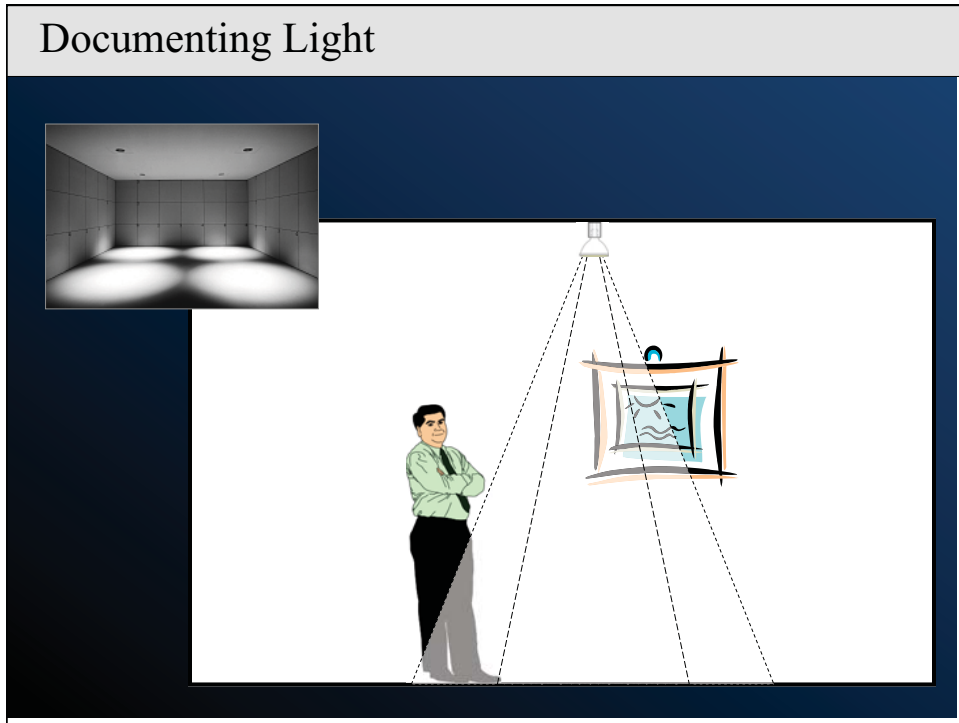
Light and Air



Rendering and Documenting Light



Rendering and Documenting Light



Rendering and Documenting Light

The image contains three architectural drawings related to the lobby lighting design for Albany Building 6:

- Top Left:** A detailed floor plan of the lobby area. It shows the layout of the lobby, foyer, main entrance, and various utility rooms like trash, mechanical, and electrical. Annotations include room names, dimensions, and lighting fixture locations with labels like 'pendant', 'downlights', and 'track lighting'. It also shows elevations and slopes.
- Top Right:** A perspective rendering of the lobby entrance. It shows a modern interior with a tiled floor, a reception desk, and people. A 'MAIN ENTRANCE' sign is visible. The lighting is rendered with a warm, yellow glow.
- Bottom Right:** A section view of the lobby, showing the vertical arrangement of the space and the placement of lighting fixtures. It highlights the 'pendant' light fixture and the 'track lighting' along the ceiling.

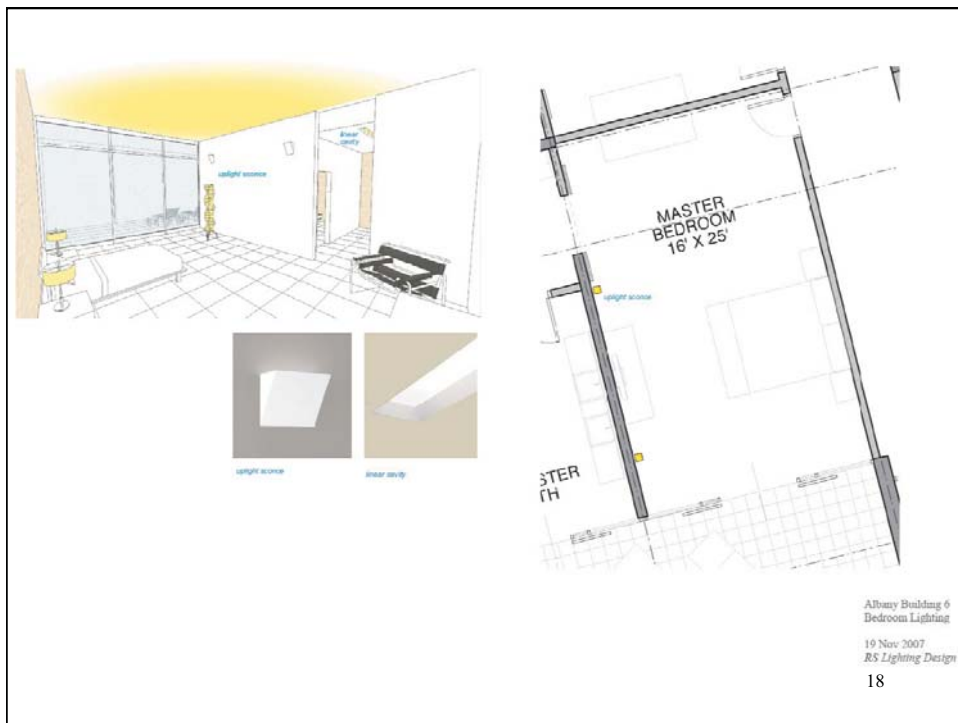
Albany Building 6
Lobby Lighting
19 Nov 2007
RS Lighting Design
15

The image contains three architectural drawings related to the bedroom lighting design:

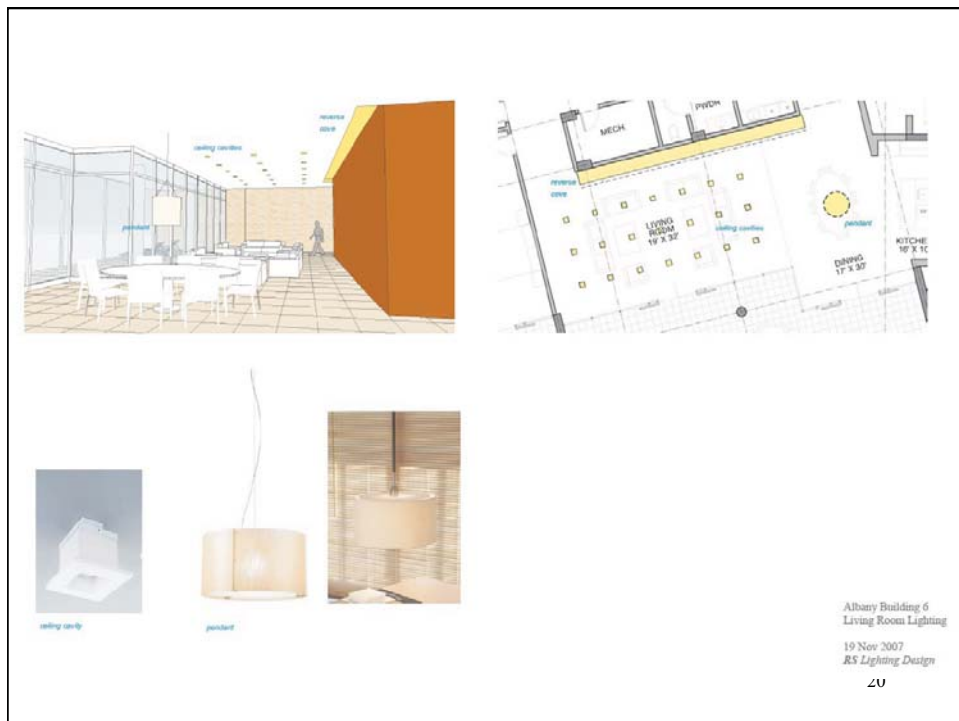
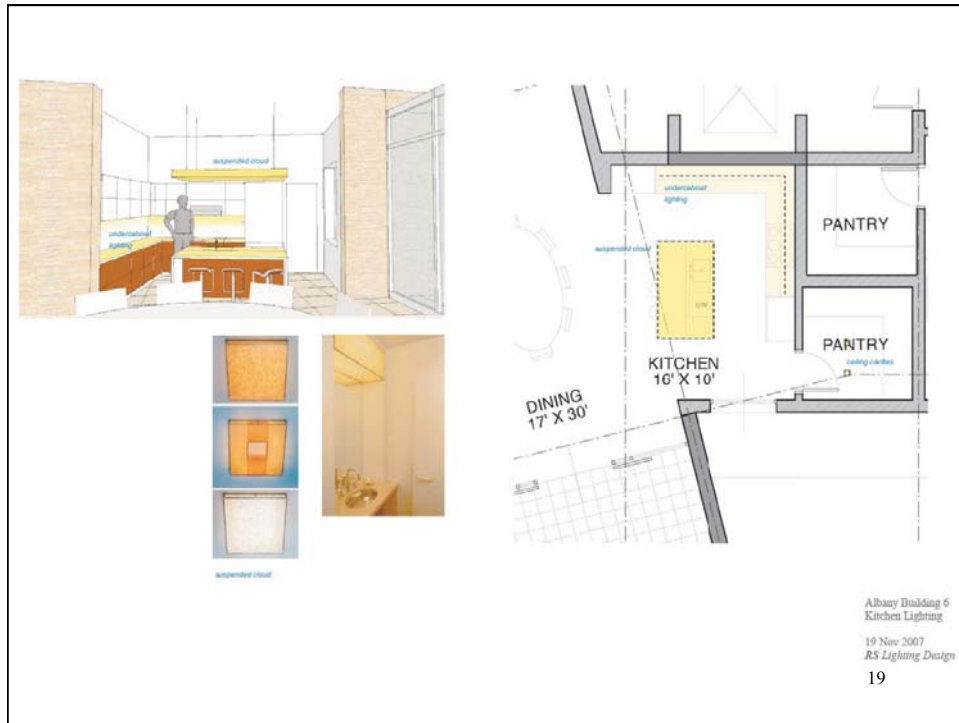
- Top Left:** A perspective rendering of a bedroom area. It shows a room with a large window, a chair, and a table. The lighting is rendered with a warm, yellow glow.
- Top Right:** A floor plan of the bedroom area. It shows the layout of the bedroom, bathroom, and living area. Annotations include room names, dimensions, and lighting fixture locations with labels like 'pendant', 'track lighting', and 'PLANTED AREA'. It also shows elevations and slopes.
- Bottom Left:** A detail drawing of a lighting fixture. It shows a cross-section of the fixture and its mounting. The drawing includes a table with technical specifications.

16

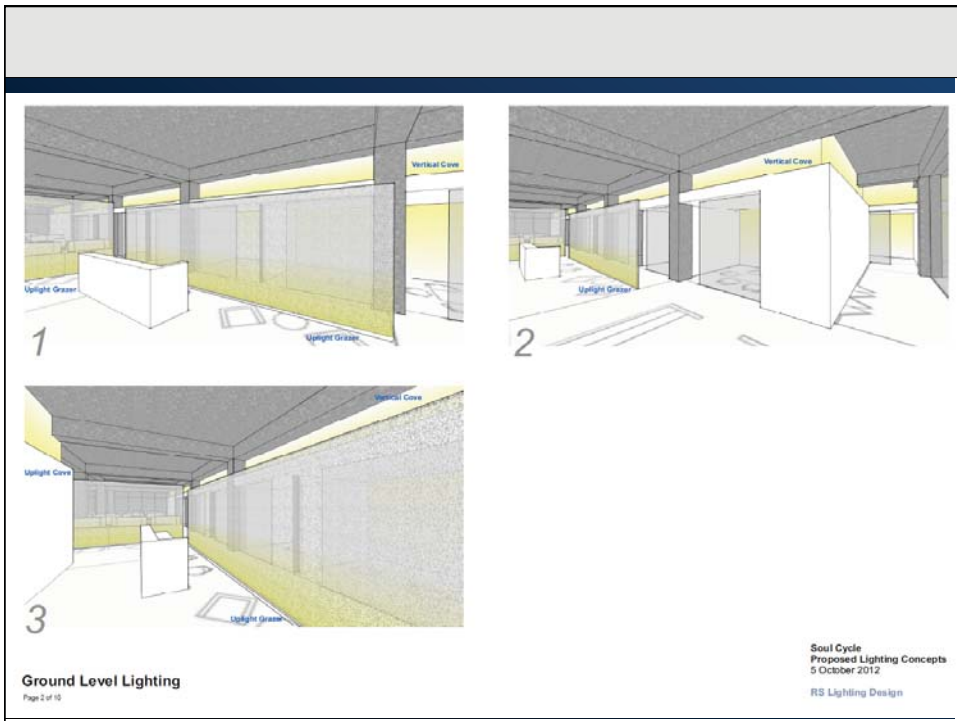
Rendering and Documenting Light



Rendering and Documenting Light



Rendering and Documenting Light



Rendering and Documenting Light

4

Uplight Cove

Luminous Cloud

Uplight Graze

Vertical Cove

Ground Level Lighting

Page 3 of 10

Soul Cycle
Proposed Lighting Concepts
5 October 2012
RS Lighting Design

This rendering block illustrates ground level lighting concepts. It features several architectural drawings and photographs. The top left drawing shows a hallway with 'Uplight Cove' and 'Uplight Graze' fixtures. The top right drawing shows a meeting room with a 'Luminous Cloud' fixture. The middle left drawing shows a long hallway with 'Vertical Cove' fixtures. The middle right section includes a photograph of a large conference room with recessed ceiling lights and a smaller photograph of a hallway with blue lighting accents. The bottom right corner contains the project title and date.

Ceiling Light Options:

- Square Cavity / Truffer
- Round Dome
- Curved Round Cavity

Reverse Cove

Ceiling Light

Vertical Cove

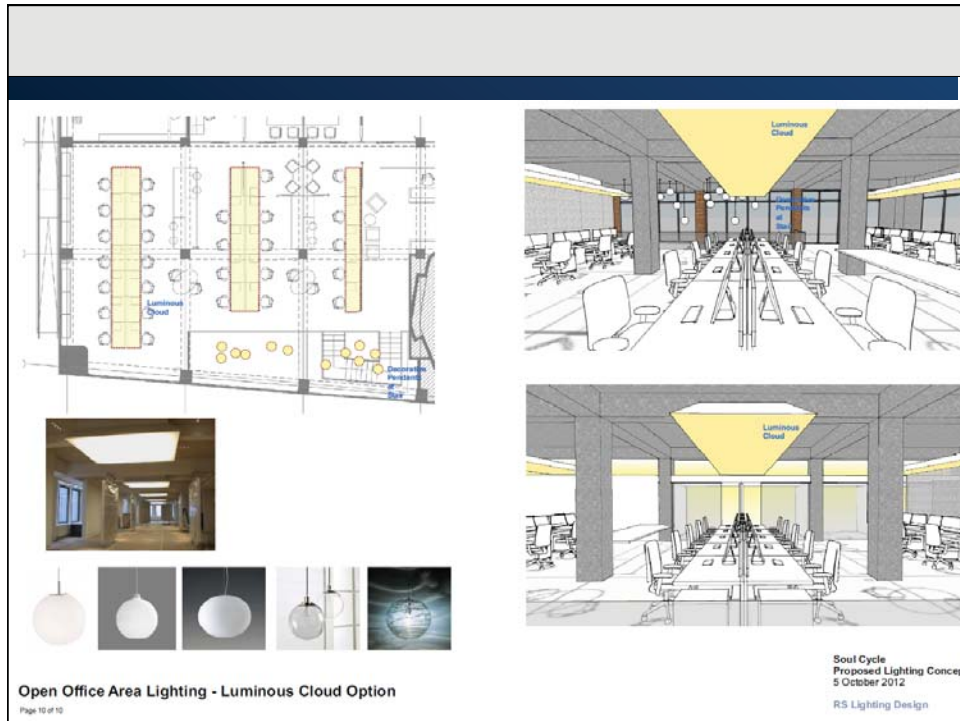
Private Office Lighting - Ceiling Lighting Option

Page 8 of 10

Soul Cycle
Proposed Lighting Concepts
5 October 2012
RS Lighting Design

This rendering block focuses on ceiling lighting options for private offices. It begins with a detailed floor plan showing the layout of several private offices. Specific areas are labeled with 'Reverse Cove', 'Ceiling Light', and 'Vertical Cove'. To the right of the floor plan, three 'Ceiling Light Options' are presented with corresponding 3D renderings: a 'Square Cavity / Truffer', a 'Round Dome', and a 'Curved Round Cavity'. Below the floor plan, two perspective drawings show the lighting fixtures installed in a private office setting. The bottom right corner contains the project title and date.

Rendering and Documenting Light



Documenting A Lighting Plan

Concept

Drawing / Documentation

- *Layout*
- *Symbols*

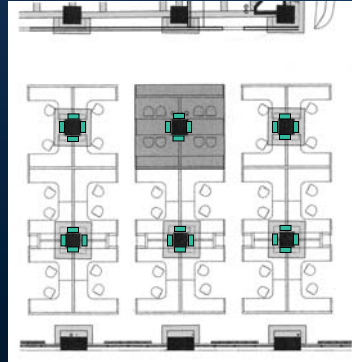
Fixture Specifications

- *Fixture Descriptions*
- *Fixture Cuts / Mfrs Submittals*
- *Fixture Details*

Rendering and Documenting Light

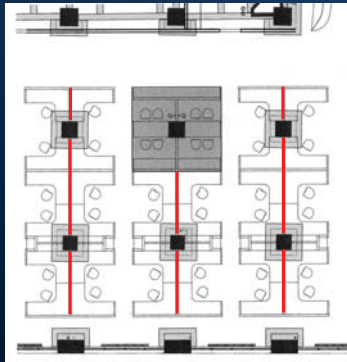
Documenting A Lighting Plan

§ Documentation... Layout



Documenting A Lighting Plan

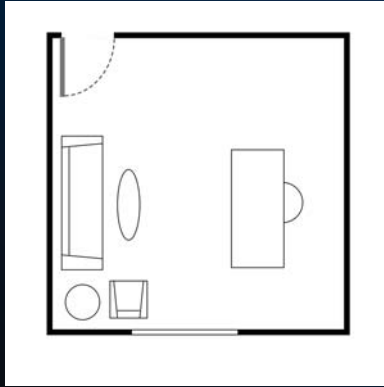
§ Documentation... Layout



Rendering and Documenting Light

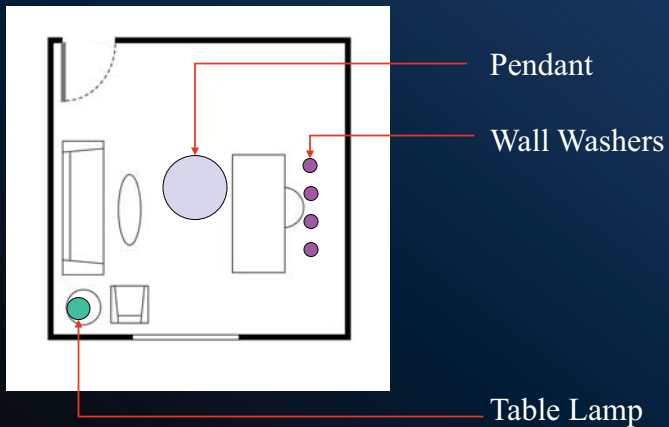
Documenting A Lighting Plan

Defining light fixtures locations



Documenting A Lighting Plan

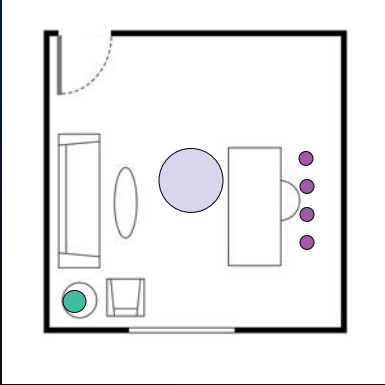
..... Diagram Method



Rendering and Documenting Light

Documenting A Lighting Plan

..... *Legend Method*



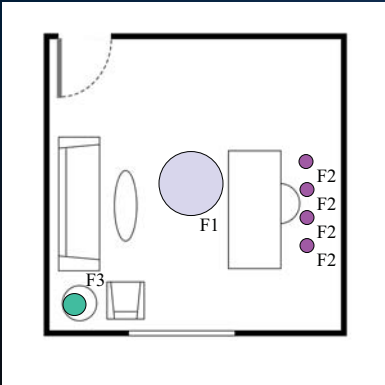
A floor plan diagram showing a room layout with a door on the left, a table and chair in the bottom left, and a desk on the right. A large purple circle (Pendant) is in the center, and five small purple circles (Wall Washers) are on the right wall. A small green circle (Table Lamp) is on the table.

Legend:

- Pendant
- Wall Washers
- Table Lamp

Documenting A Lighting Plan

..... *Type Method*



A floor plan diagram identical to the Legend Method, but with labels: 'F1' next to the large purple circle, 'F2' next to each of the five small purple circles, and 'F3' next to the small green circle.

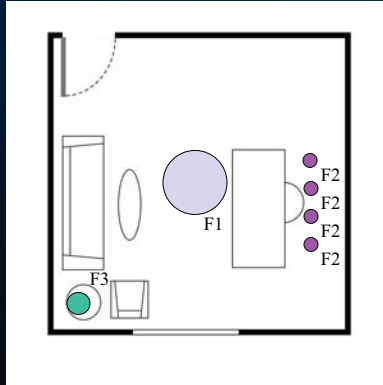
Fixture Types:

- F1 Pendant
- F2 Wall Washers
- F3 Table Lamp

Rendering and Documenting Light

Documenting A Lighting Plan

..... *Type Method*



Fixture Specification

Fixture Types:

F1 Pendant

F2 Wall Washers

F3 Table Lamp

Documenting A Lighting Plan

Fixture Specifications

Written Documentation to Describe Fixture

- *Location, Size, Performance, Source, etc.*
- *Manufacture!!!!*

Keyed to a Layout or Plan

- *Type Designations*

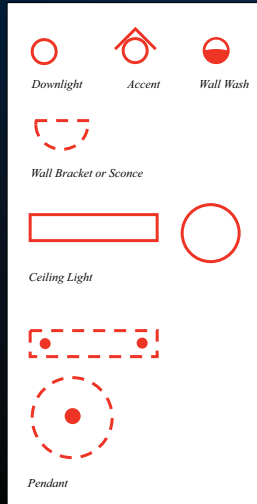
Fixture Cuts

- *Manufactures Catalog Cuts or Submittals*
- *Details*

Rendering and Documenting Light

Documenting A Lighting Plan

§ Graphics / Symbols



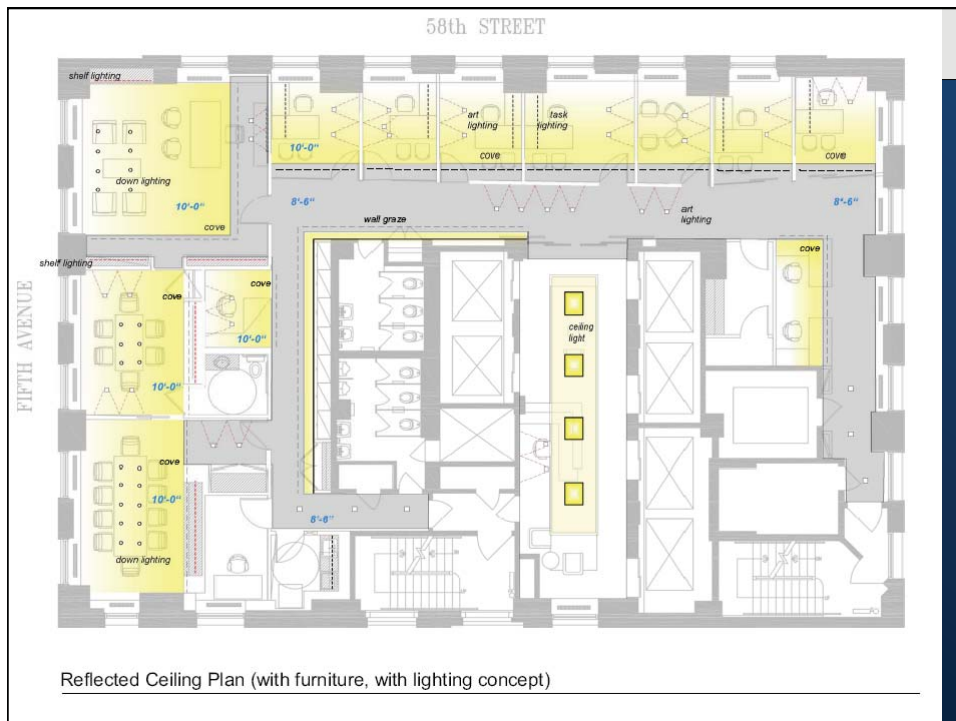
§ Graphic to Define Location

- Floor, Walls, Ceiling (Solid or Dashed)
- Drawn to Scale and Shape

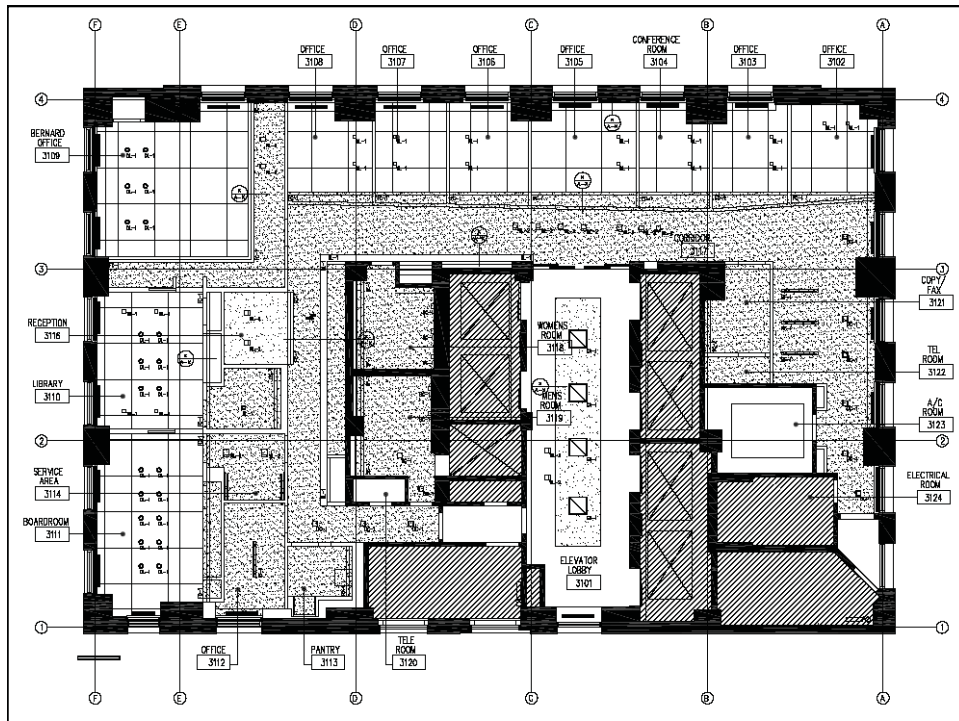
§ Descriptive of the Type of Fixture

- Downlight, Pendant, Floor Lamp

§ Keyed to Legend or Fixture Specification (aka **Schedule**)



Rendering and Documenting Light



Rendering and Documenting Light

Documenting Light Concepts

Furniture Plan - Lighting

480 West 20th Street Restaurant Control Diagram

Drawing Note:

- Coordinate electrical circuiting with Electrical Engineer.
- Refer to Control Spec (by Lighting Designer) for equipment description and options.
- Control device locations to be determined.
- Only light fixtures requiring special control shown. Refer to Architectural drawing for other lighting.
- Refer to architectural drawings for fixture locations.

Ⓧ Provide wall sconce dimmer control (by Lantern)

Lighting Design

Option A

Fluorescent Channels
Architectural Cavity
Diffuser (NewMat)

Direct White Light
Reflected Red Light

Recessed Adj. Accent Ceiling Light

Rendering and Documenting Light

Option B

Recessed Wall Wash Fixtures

Architectural Cavity - propose dark horizontal, white vertical

Fixture Option One

Fixture Option Two (with lens)

Recessed Adj Accent

Ceiling Light

ceiling slots

wall wash slot

linear pendants

uplight cove

internal lit display box

uplight cove

uplight cove

mini ceiling light

ceiling slots

ceiling domes

ceiling slots

Wall Wash Slot - open

Ceiling Slots - lensed

Uplight Cove - above cavity

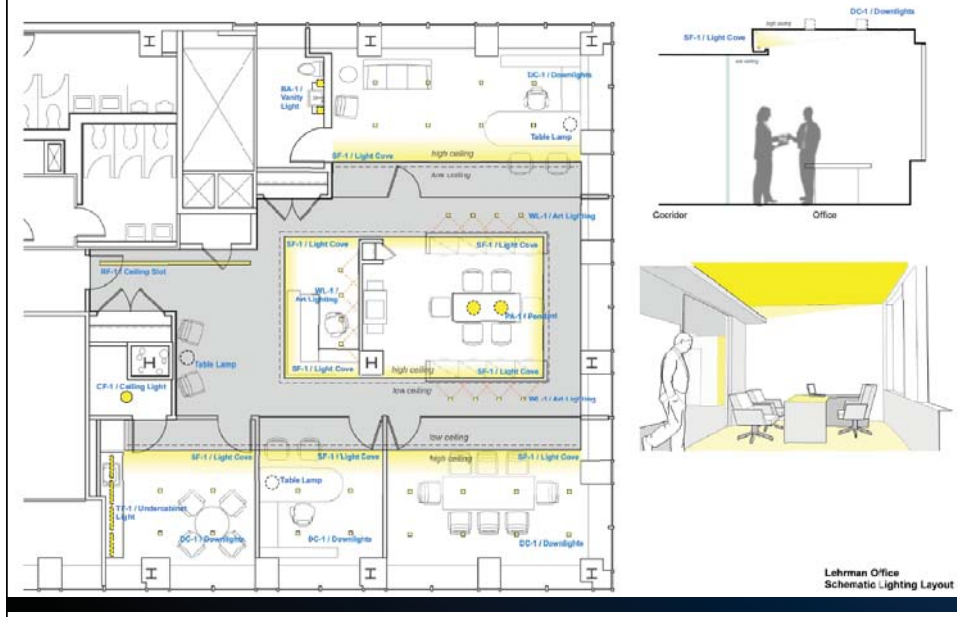
Linear Pendant - indirect

Mini Ceiling and Pendant Lights - white cylinders

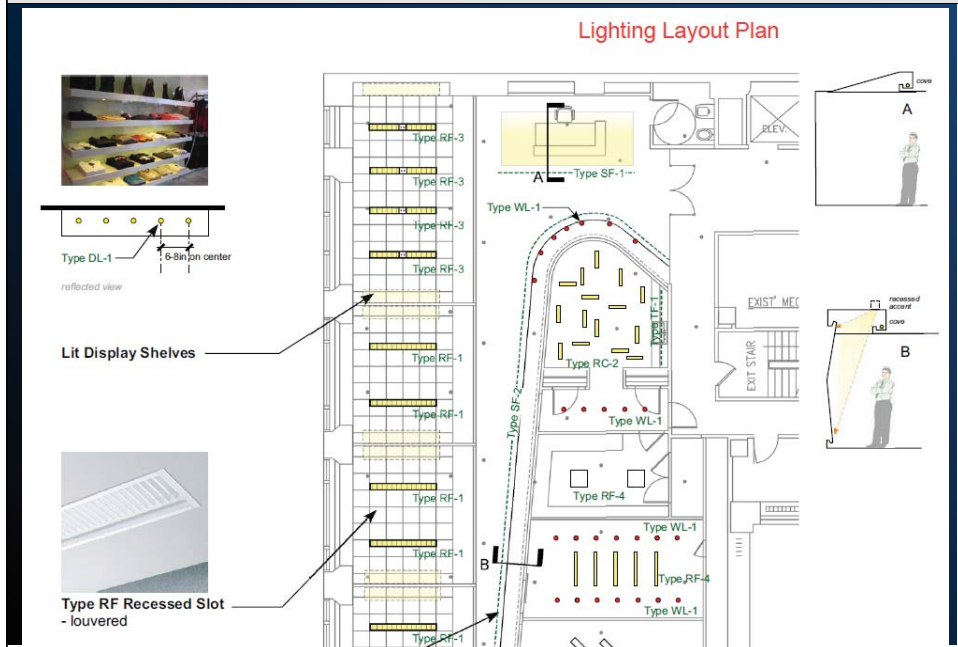
Ceiling Domes - 24 inch and 48 inch

Rendering and Documenting Light

Documenting A Lighting Plan: Specifications

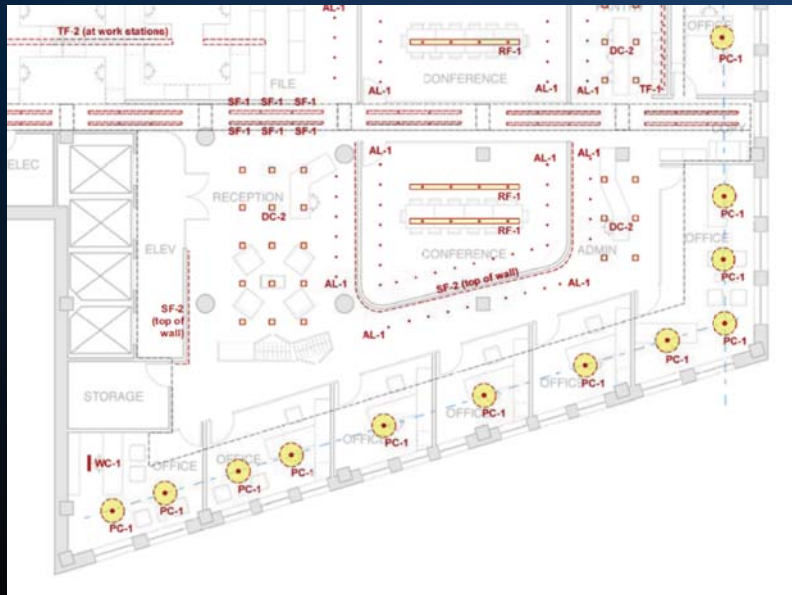


Documenting A Lighting Plan: Specifications



Rendering and Documenting Light

Documenting A Lighting Plan: Specifications



Documenting A Lighting Plan: Specifications



Rendering and Documenting Light

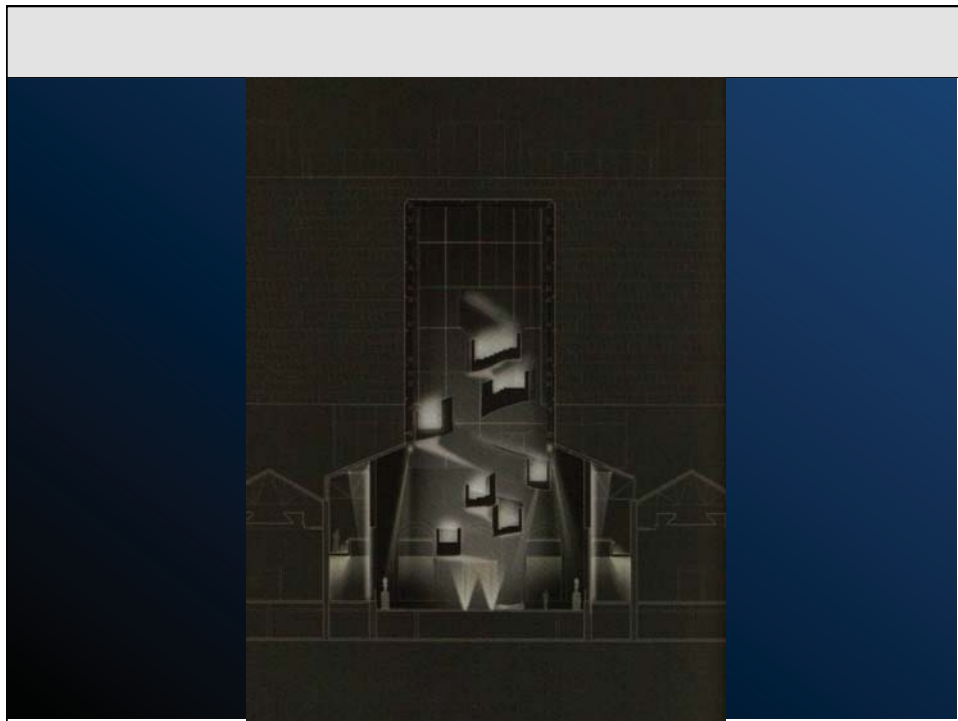
Type Designations (RS Lighting Design)			
X	B	A	- 1
<i>Optional for Exterior Fixtures</i>	Function	Source (Lamp)	Number
	A Accent Light B Bracket/Sconce C Ceiling Light D Downlight F Floodlight K Other L Landscape P Pendant R Cove S Socket Strip/Channel T Task / Table Lamp U Uplight / Indirect W Wall Wash Y Track Fixture	A Arbitrary (Incand) C Compact Fluor. D Diode (LED) F Fluorescent (Tubular) H High Pressure Sodium I Induction L Low Voltage M Metal Halide N Neon P Parabolic Q Quartz Halogen	<i>Used to identify size, wattage, series, etc.</i>
Other Misc:	BO Bollard CU Custom DS Designer Select	EX Existing YY Track FC Fluor. Cove	

Documenting Light Concepts

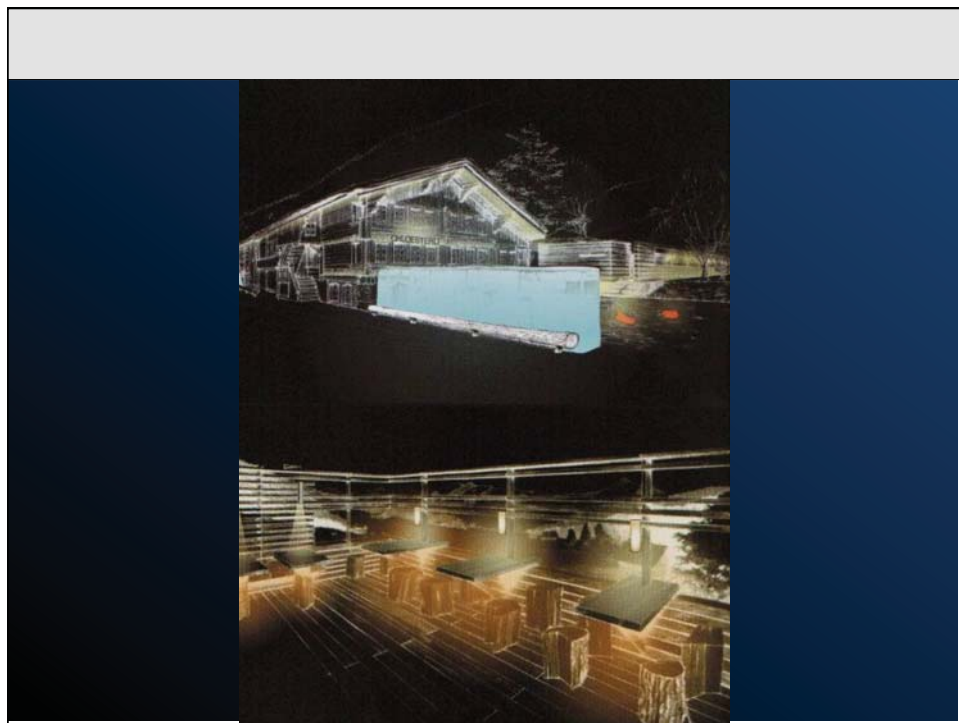
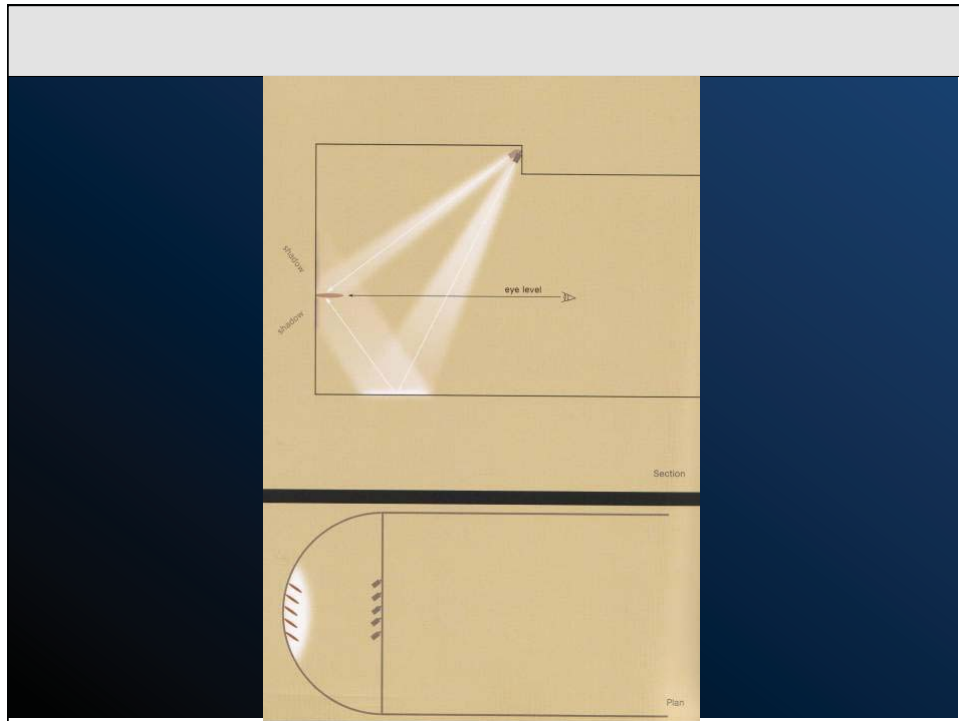
CONCEALED UPLIGHT & STEM
OPT A
OPT B
GLASS ENCLOSURE
METAL ENCLOSURE
UPLIGHT BELOW SHIELD

Rendering and Documenting Light

Documenting Light Concepts

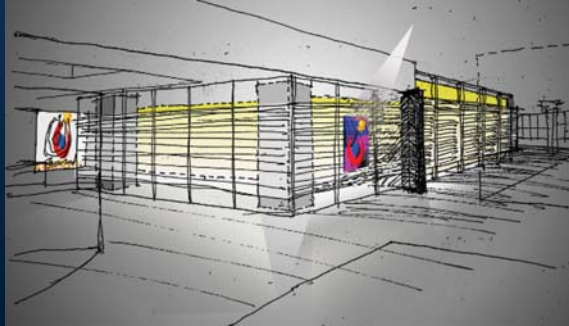
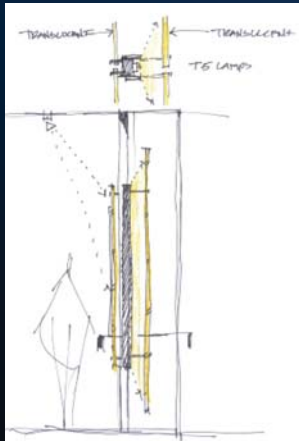


Rendering and Documenting Light

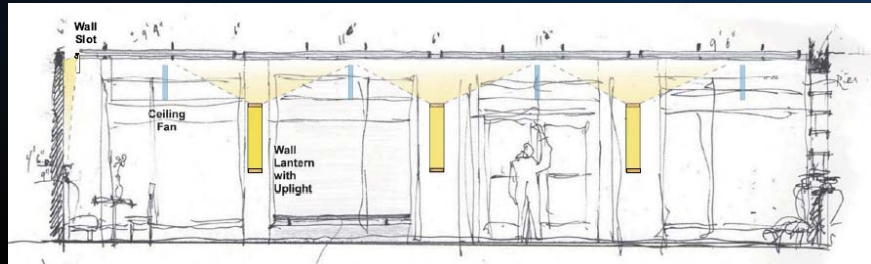
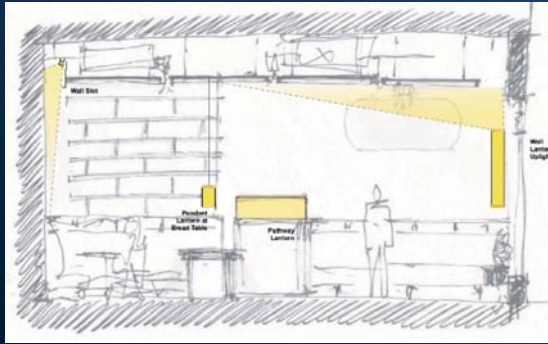


Rendering and Documenting Light

Documenting Light Concepts



Documenting Light Concepts

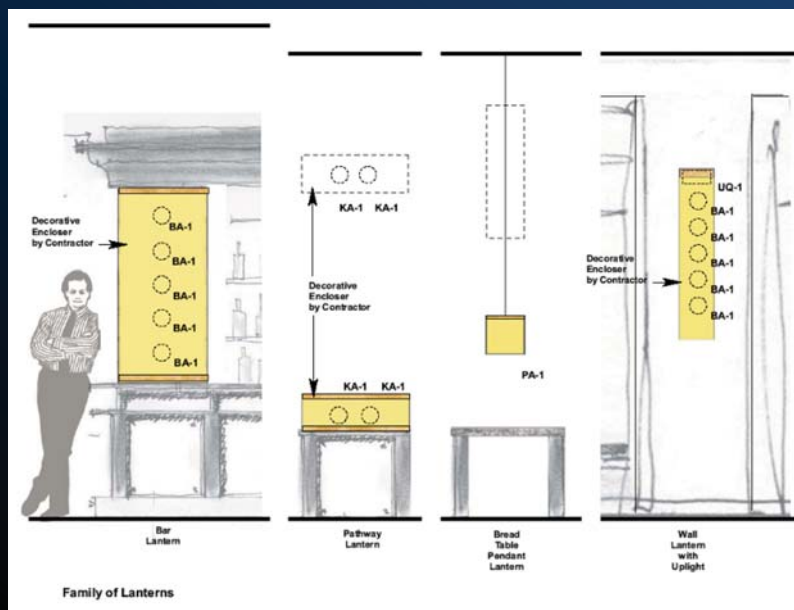


Rendering and Documenting Light

Documenting Light Concepts

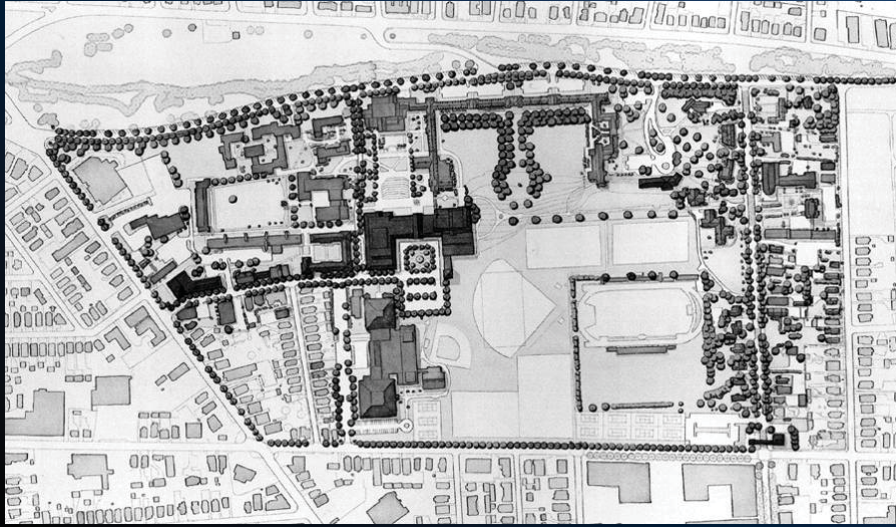


Documenting Light Concepts

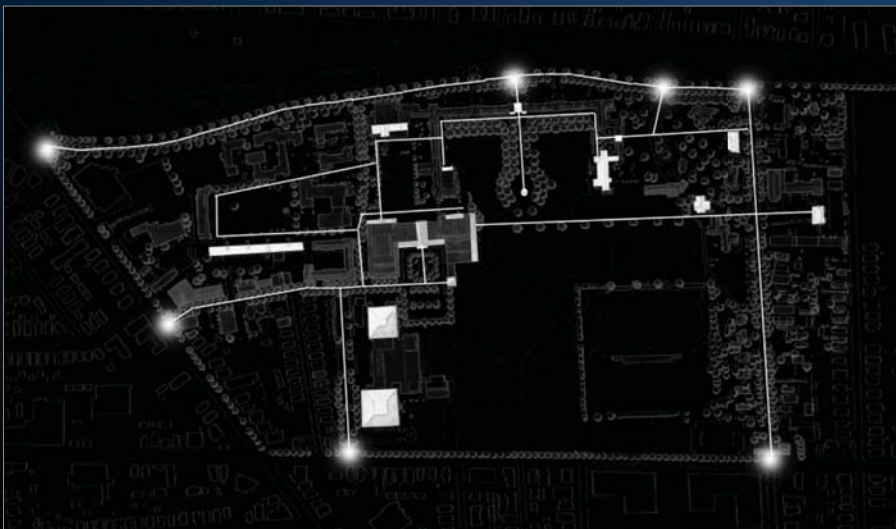


Rendering and Documenting Light

Documenting Light Concepts

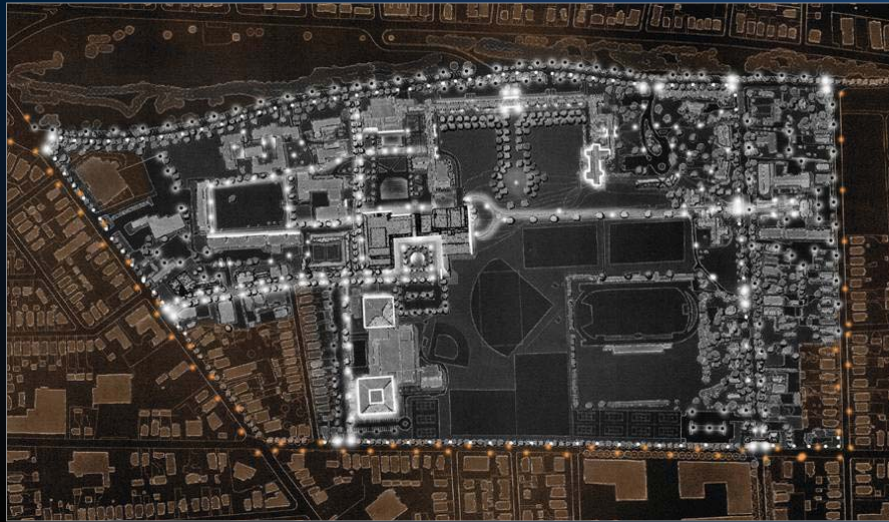


Documenting Light Concepts

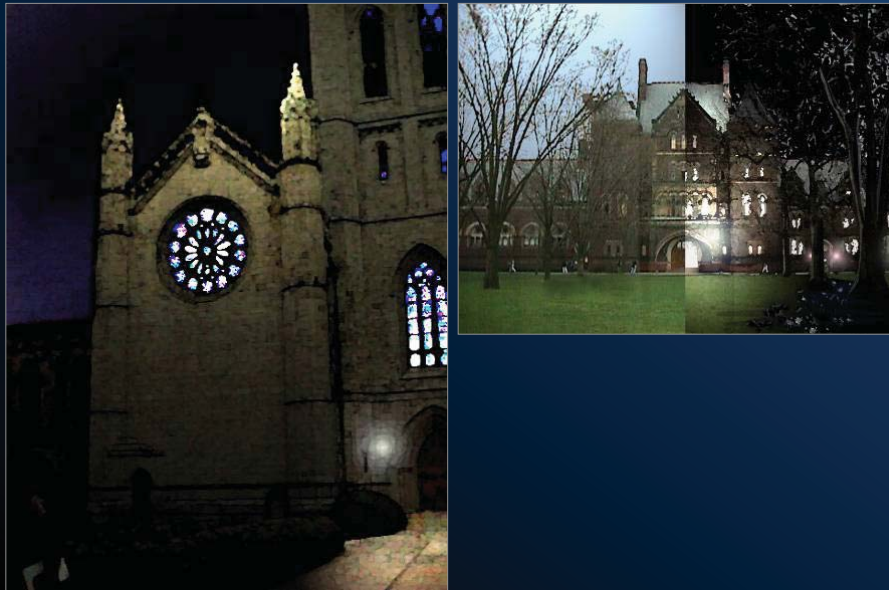


Rendering and Documenting Light

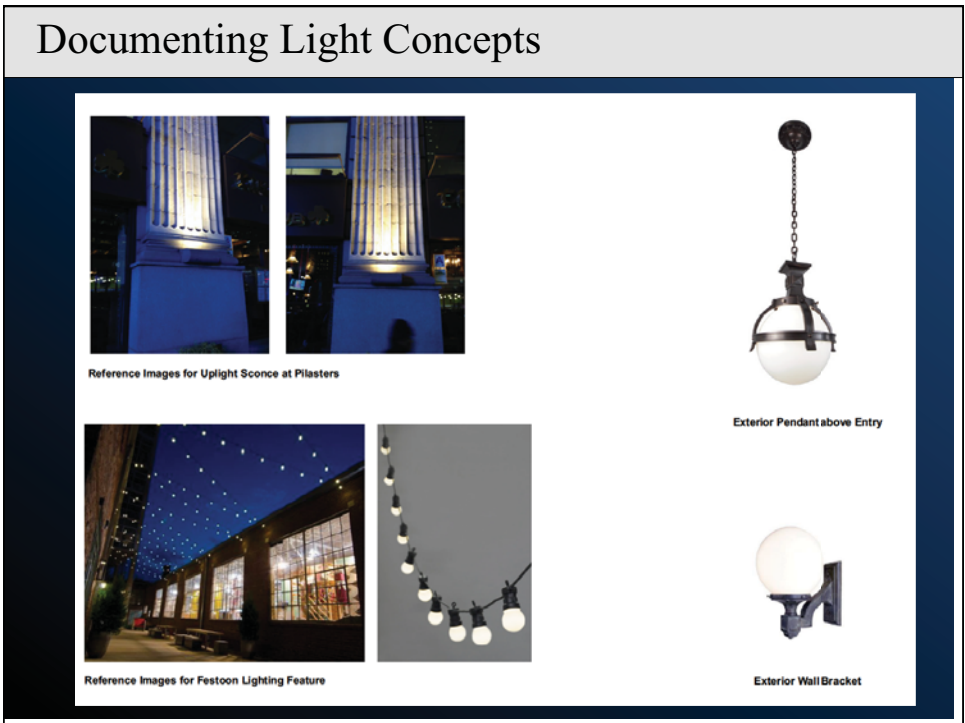
Documenting Light Concepts



Documenting Light Concepts

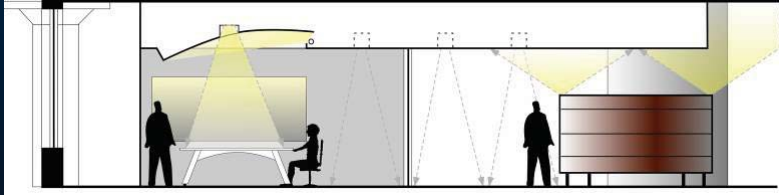


Rendering and Documenting Light



Rendering and Documenting Light

Documenting Light Concepts

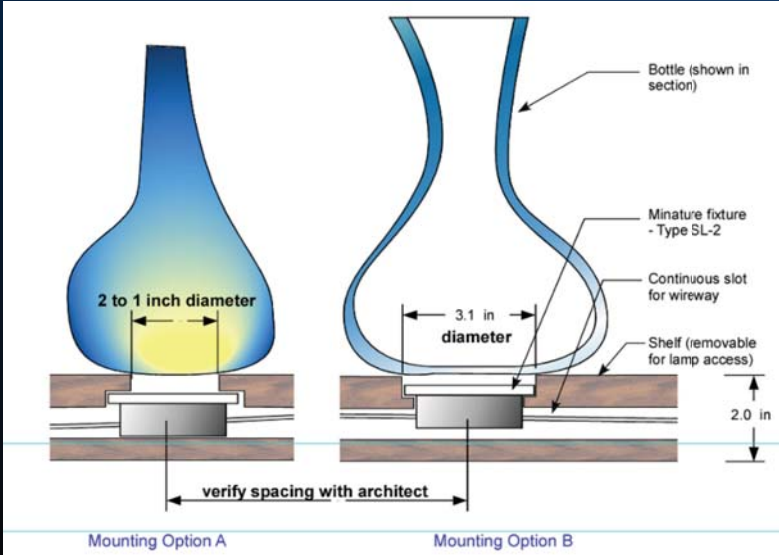


*Downlights
Over
Table
-
Cove
Over
Table*

*Downlights
At
Circulation*

*Uplights
On top of
Banquets*

Documenting Light Concepts



2 to 1 inch diameter

3.1 in diameter

Bottle (shown in section)

Minature fixture - Type SL-2

Continuous slot for wireway

Shelf (removable for lamp access)

2.0 in

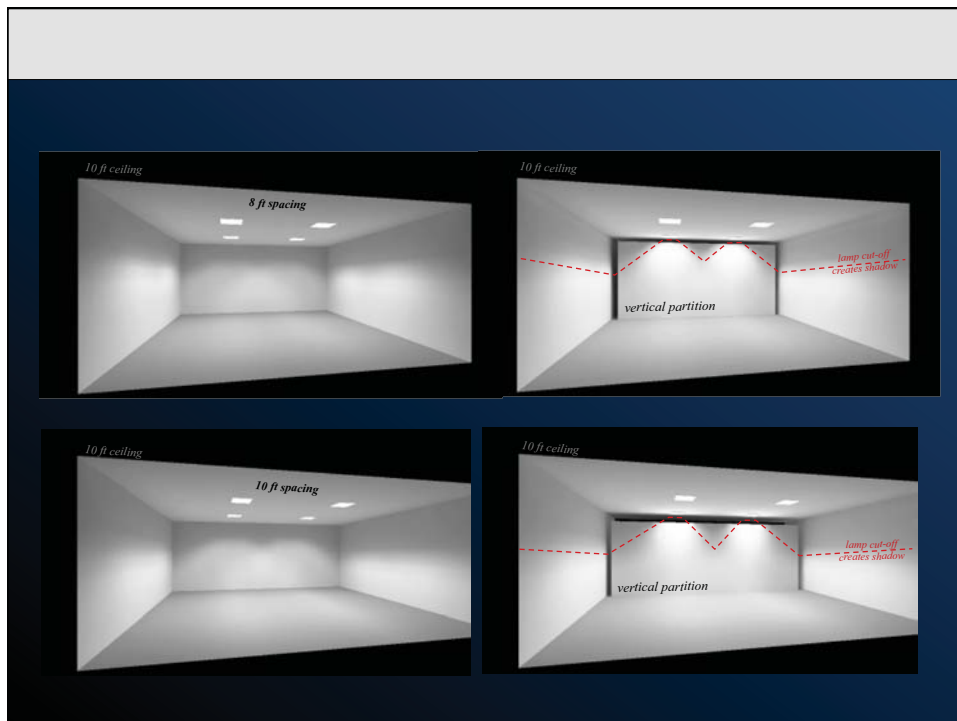
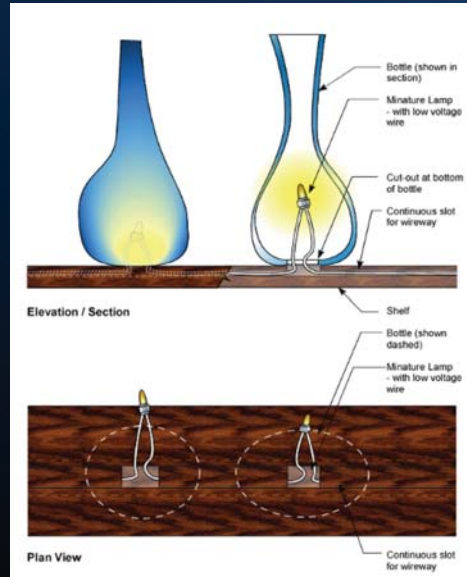
verify spacing with architect

Mounting Option A

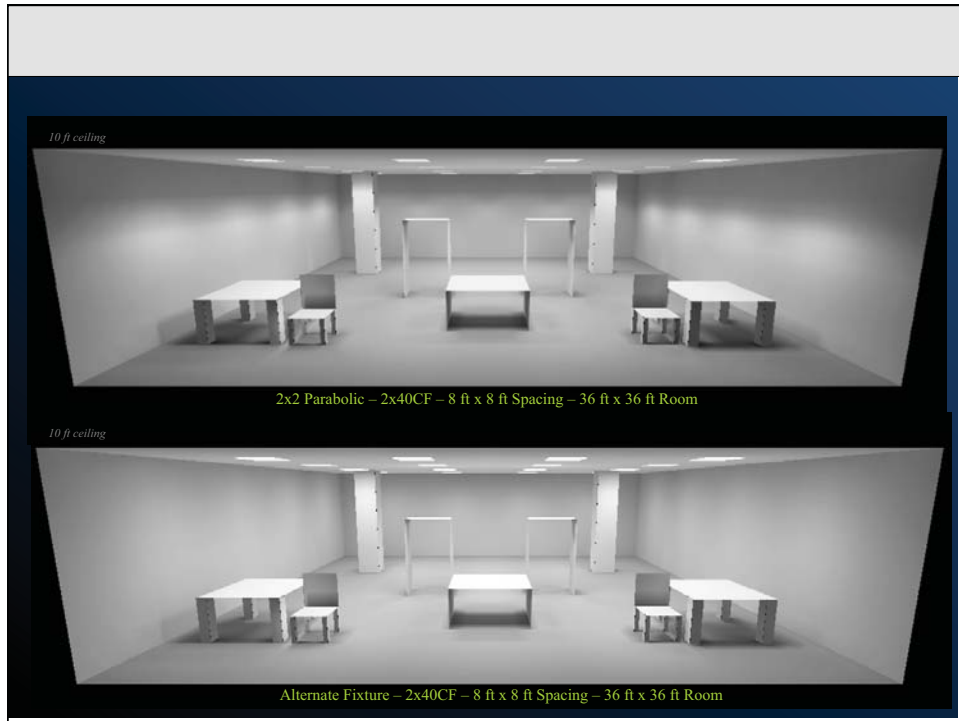
Mounting Option B

Rendering and Documenting Light

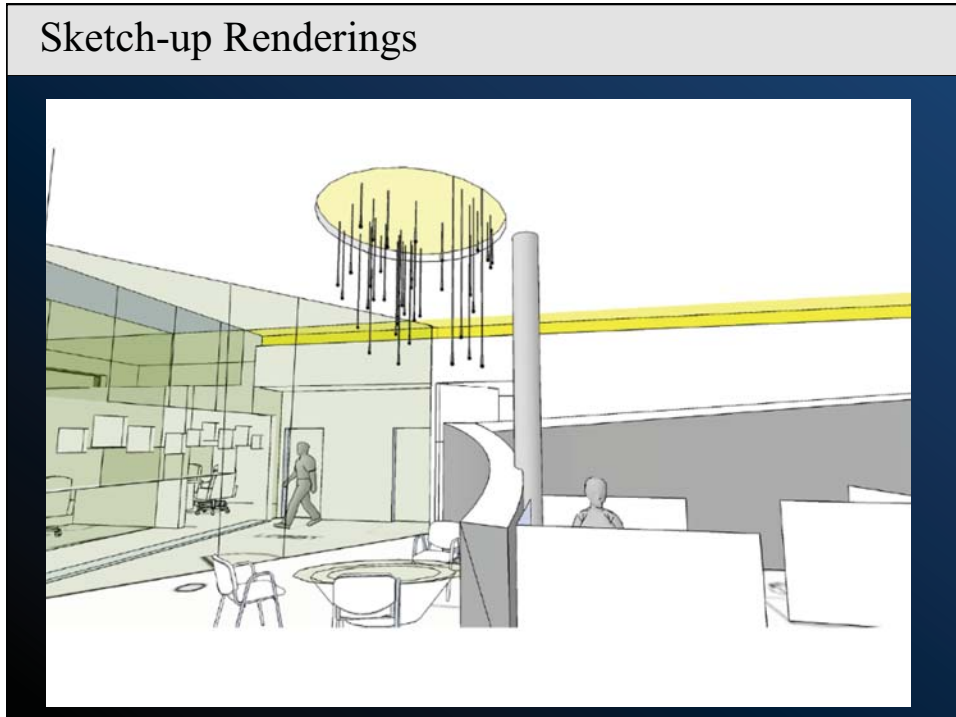
Documenting Light Concepts



Rendering and Documenting Light



Sketch-up Renderings



Rendering and Documenting Light

Sketch-up Renderings



Sketch-up Renderings



Rendering and Documenting Light

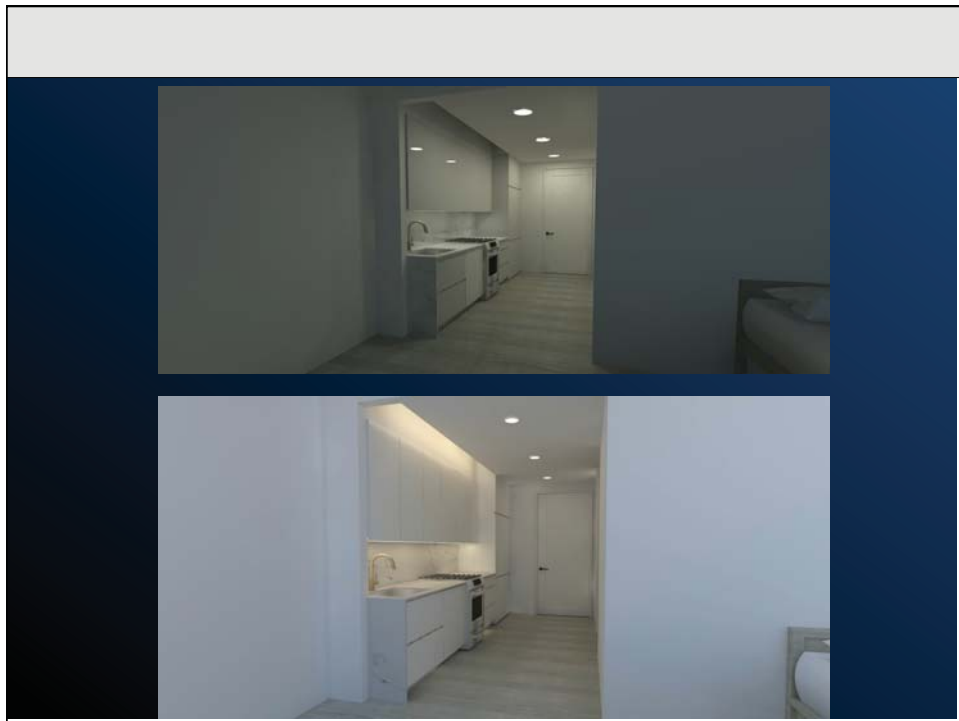
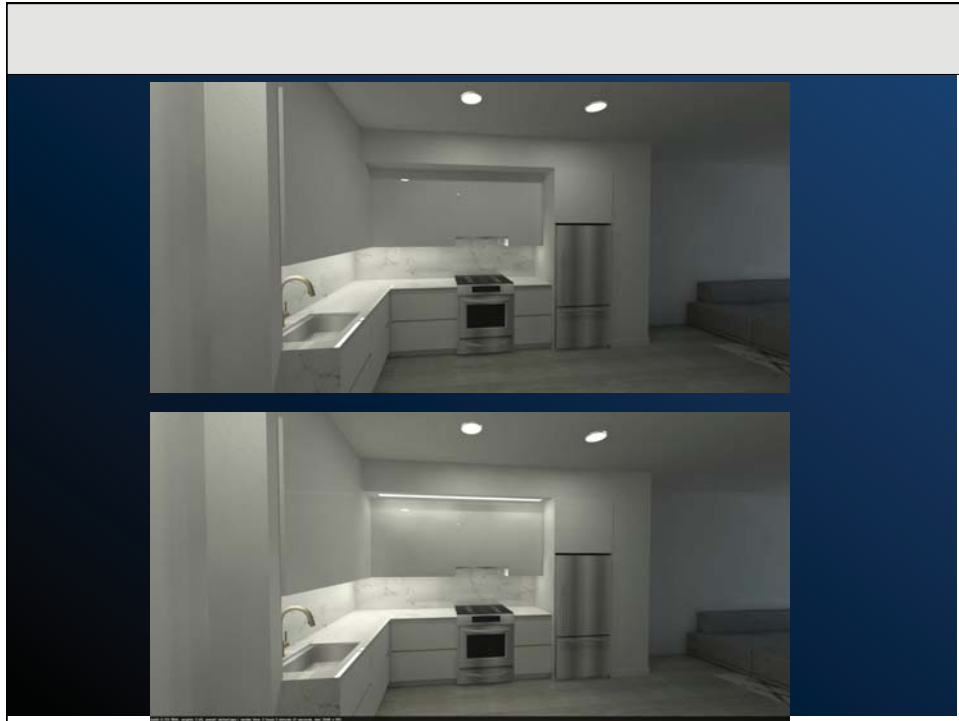
Sketch-up Renderings



Sketch-up Renderings



Rendering and Documenting Light



Rendering and Documenting Light

Sketch-up Renderings



Sketch-up Renderings



Rendering and Documenting Light

Sketch-up Renderings



Sketch-up Renderings



Rendering and Documenting Light

Sketch-up Renderings



Sketch-up Renderings



Rendering and Documenting Light

Sketch-up Renderings



Sketch-up Renderings



Rendering and Documenting Light

Sketch-up Renderings



Sketch-up Renderings



Rendering and Documenting Light

Sketch-up Renderings



Sketch-up Renderings



Rendering and Documenting Light



Rendering and Documenting Light

Sketch-up Renderings



Sketch-up Renderings



Rendering and Documenting Light

Sketch-up Renderings



Sketch-up Renderings

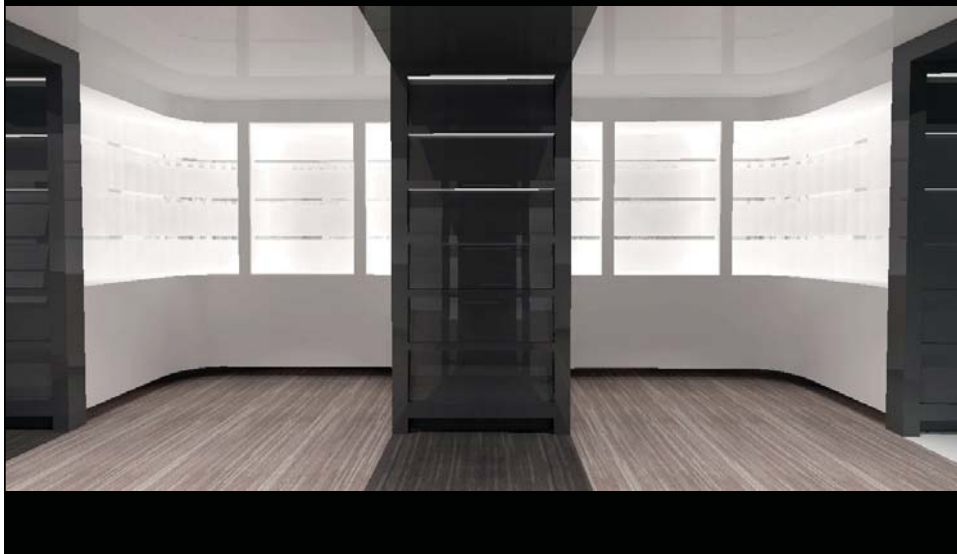


Rendering and Documenting Light

Sketch-up Renderings

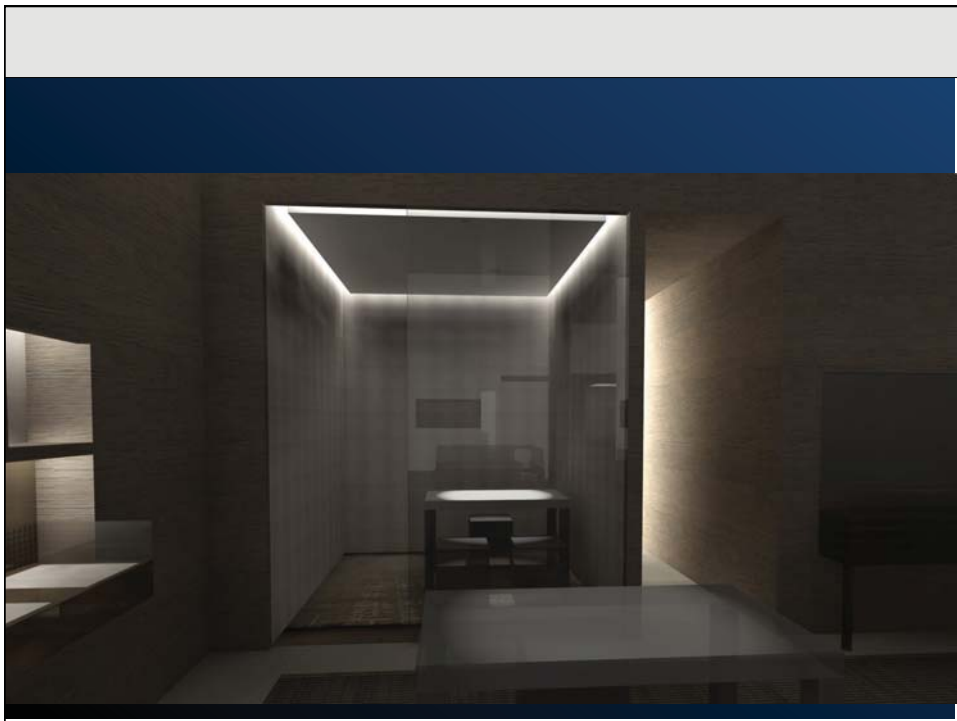
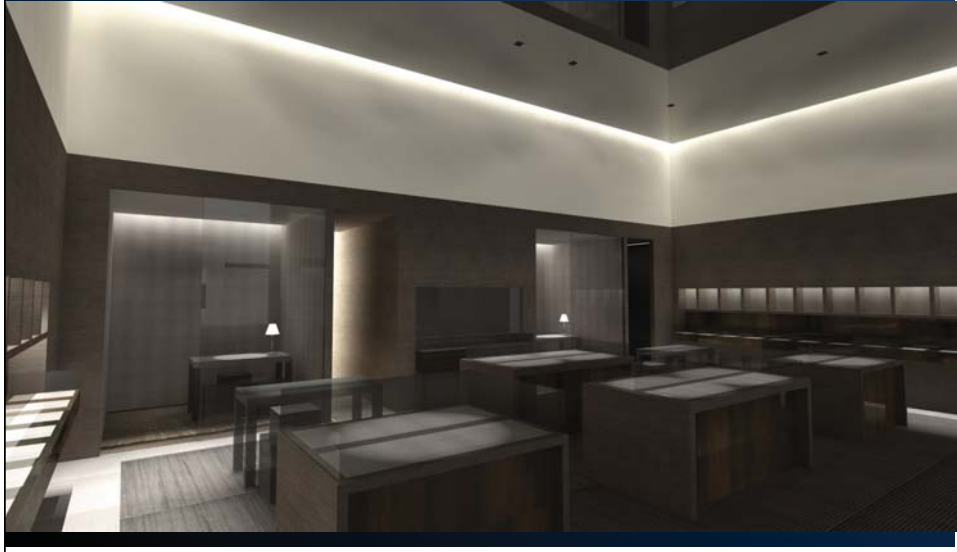


Sketch-up Renderings

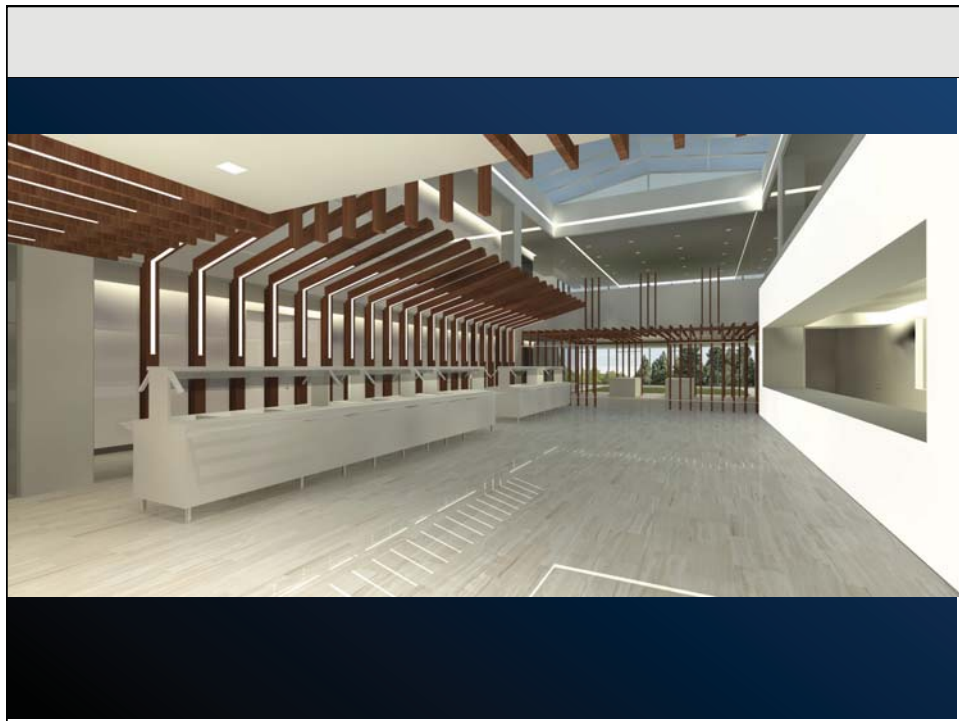
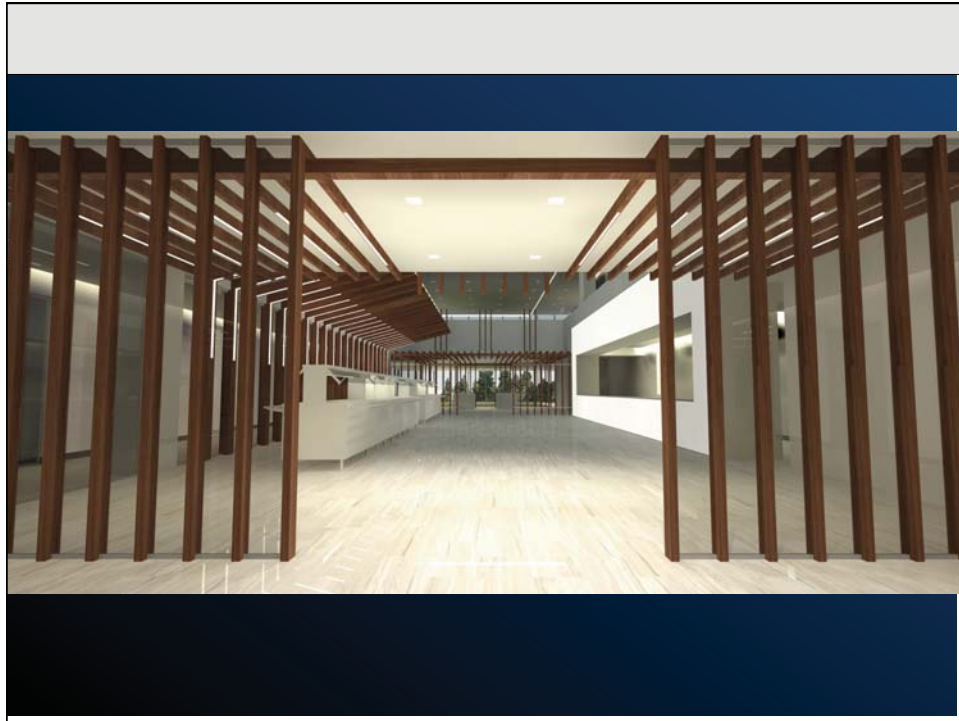


Rendering and Documenting Light

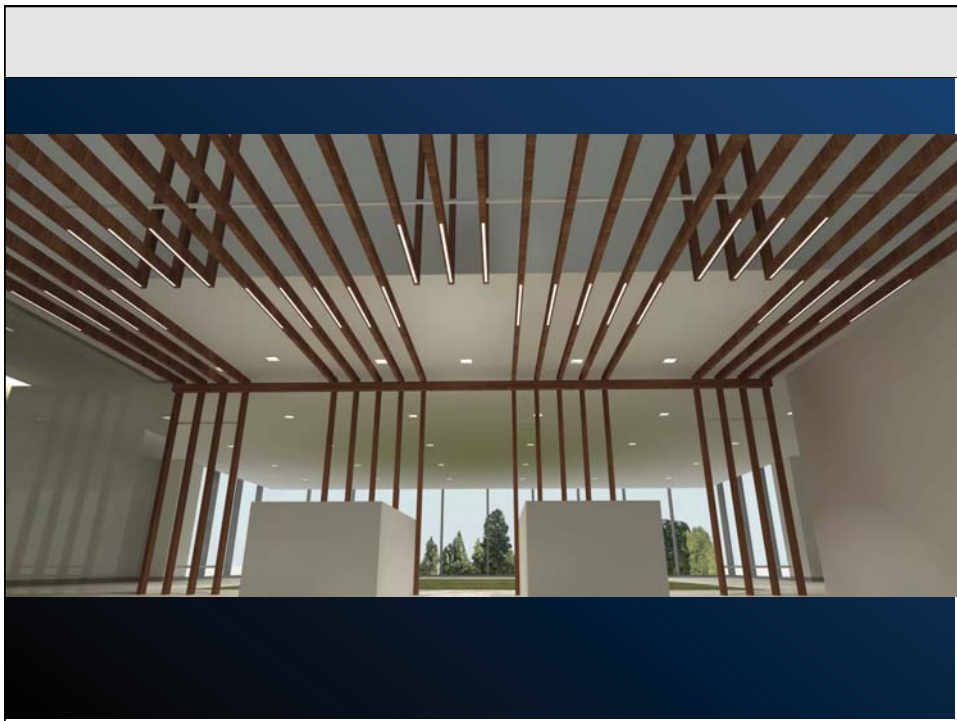
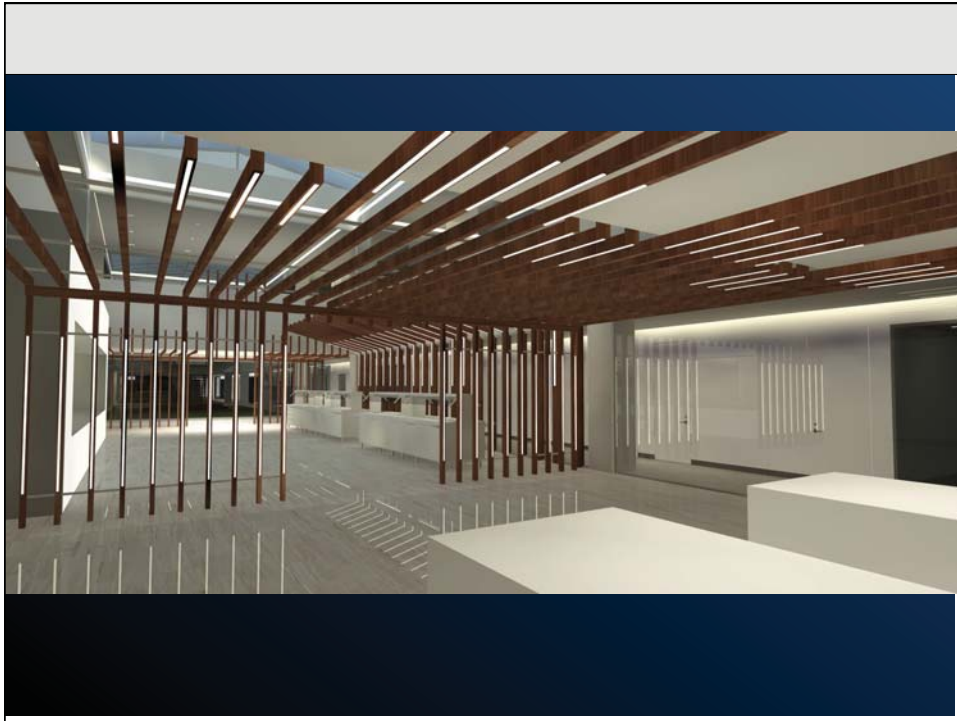
Sketch-up Renderings



Rendering and Documenting Light



Rendering and Documenting Light



Rendering and Documenting Light

V-Ray Renderings



Documenting Light Concepts

